



# Stat<sup>®</sup> for PeopleSoft

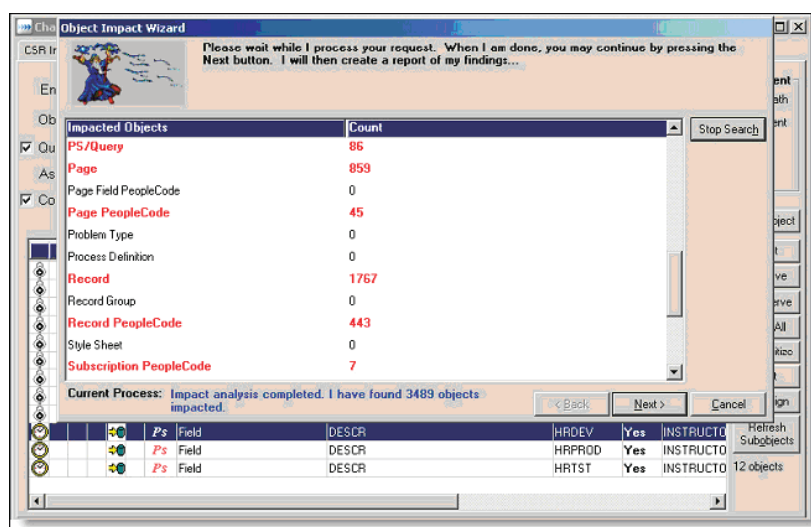
## Control, Visualize and Automate Application Changes

With the majority of PeopleSoft implementations, a great deal of customization is necessary to fully incorporate all the business functionality that a company needs. Constant updates/patches need to be applied in order to comply with software support policy and government regulations (tax laws and changes, etc.). Further complexity is introduced as these updates or patches can conflict with existing and future customizations. The massive volume of patches, configurations, customizations, upgrades and migrations can quickly overwhelm the application administrative staff. This introduces a significant risk to application owners of a breakdown in process controls, and results in lapses of quality, availability, performance, and delivery of business critical applications. The growing trend of IT initiatives to comply with standards and regulations like the Sarbanes-Oxley Act, ITIL, COBIT, COSO, Basel II, etc. underscores the need to implement more strict and comprehensive change control processes.

Stat<sup>®</sup> for PeopleSoft makes organizations more responsive to change through increased visibility into and control over the change process. Through version control, impact analysis, object/file locking, automated workflow, migration management, and powerful reporting and auditing capabilities, Stat enables organizations to control and enact change without disrupting business.

### Stat for PeopleSoft:

- Manages change for a PeopleSoft environment throughout the entire application lifecycle, development through test, to production and back
- Provides a single repository for all upgrade, patching, version control and auditing needs



Stat<sup>®</sup> for PeopleSoft features Patch Impact, which provides visibility into the PeopleSoft applications and objects affected by a patch.

- Offers complete change management and version control – certified by PeopleSoft
- Automates and documents the patching process
- Manages change of both PeopleSoft database and flat file objects
- Safeguards and locks customizations to prevent overwrites
- Enforces custom business rules via workflows
- Restores objects and files immediately to a prior version
- Automates and tracks the distribution of changes across all PeopleSoft environments
- Offers comprehensive auditing and reporting of changes and customizations

## System Requirements:

### Supported PeopleSoft RDBMS

- Oracle 8.1x, 9.x, 10g, 11g
- MS SQL Server 7.0, SQL Server 2000, 2005
- DB2 OS 390 6.1
- DB2 z/OS 7.1, 8.1
- DB2/UDB for AIX 7.2, 8.1,8.2
- Sybase ASE 12

### Supported Stat RDBMS

- Oracle 8.1.x, 9.x, 10g, 11g
- MS SQL Server 2000, 2005

### Supported Client Operating Systems

- Windows 2000
- Windows XP

### Supported Stat Server Platforms

- Windows 2000, XP, 2003 Serve
- Solaris 8, 9, 10
- AIX 5.2, 5.3
- HPUX 11.11
- Red Hat Linux AS Rel 4
- BEA WebLogic 9.2 or higher (Optional WebLogic Configuration)

### Stat Web Client

- Browser: IE 5.5 or above

## INTEGRATED WITH



PEOPLESOFT ENTERPRISE



www.quest.com  
e-mail: info@quest.com  
Please refer to our Web site for international office information.

- Documents all changes and patches automatically, providing a detailed audit trail
- Manages change at the object level, and provides superior impact analysis and patch application
- Manages code natively, not as a flat file
- Offers systematic and well-documented rollback capability
- Supports user-defined database and file objects

Stat for PeopleSoft helps manage change within the PeopleSoft Environment through the following features:

### Automated Patching

Automates and enforces predetermined, best-practice, optimized change management processes. With Stat automatically deploying changes, developers and DBAs are free to focus on higher-value activities, and the risk of manual error is minimized.

### Impact Analysis

Stat identifies the impact that object modifications and patches have on other objects as the changes cascade through the system. This comprehensive analysis provides administrators with a complete report of all changes impacting a given instance, allowing for a more streamlined testing process.

### Version Control and Roll Back

Stat captures an unlimited number of interim application versions ("snapshots" taken during development), which archives with any combination of objects/files in each version. When necessary, this allows for selective (by object/file) retrieval and rollback.

### Workflow for Project and Process Management

Stat enables project managers to track all issues, automate team processes, group tasks by project, assign status requirements, and provide approval authorization. This can be managed from one central location, through either the Stat Web or Windows clients.

### Regulatory Compliance

Stat's features ensure regulatory compliance by locking out and auditing unauthorized changes to an application. Stat enforces change policies via workflow, role-based security rights and audits any and all changes to the underlying business logic. Stat also provides compliance-related reports in order to more easily achieve compliance objectives.

### Support for PeopleSoft Unicode Databases

Stat supports the locking, archival and migration of all PeopleSoft Unicode data.

### About Quest Software, Inc.

Quest Software, Inc., a leading enterprise systems management vendor, delivers innovative products that help organizations get more performance and productivity from their applications, databases, Windows infrastructure and virtual environments. Through a deep expertise in IT operations and a continued focus on what works best, Quest helps more than 90,000 customers worldwide meet higher expectations for enterprise IT. Quest Software can be found in offices around the globe and at [www.quest.com](http://www.quest.com).

©2008 Quest Software, Inc. All rights reserved. Stat is a registered trademark of Quest Software. All other brand or product names are trademarks or registered trademarks of their respective owners.

DSA\_Stat\_PSFT\_0527008\_MJ