



"I've relied on LiteSpeed for six years to achieve what I already considered substantial time and disk savings for backup and recovery. I'm excited that Quest has introduced new technology that takes this to a whole new level, and continues to add even more value to a tool that helps me do my job more efficiently and instantly saves my organization money."

—Thomas LaRock  
database administrator at a  
financial services company

- Compresses backups up to 40:1 over native - with the latest SmartDiff technology
- Includes nine levels of embedded encryption
- Restores data down to the table, row and object level (i.e. tables, stored procedures, views)
- Provides the ability to attach documentation to backup files
- Reduces the size of log backups and increases the speed of log transfer
- Creates and restores a database backup file through a simple double click of the file
- Provides backup and recovery support for SQL Server 7, 2000, 2005, and 2008

# LiteSpeed®

## for SQL Server

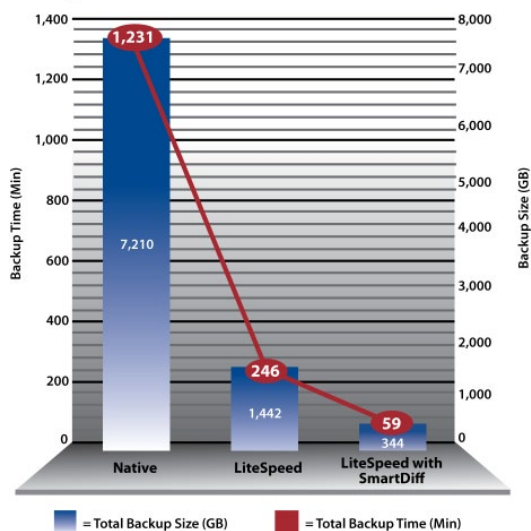
### The Industry's Fastest, Most Flexible Database Backup and Recovery Solution

LiteSpeed® for SQL Server is a fast and flexible backup and recovery solution that allows DBAs to easily maintain complete control over the backup and recovery process. Its low-impact, high-performance compression technology in LiteSpeed enables users to reduce storage costs, as well as SQL Server backup and recovery windows.

With its latest SmartDiff technology, LiteSpeed for SQL Server's compression ratio jumps from 20:1 up to 40:1 over native, providing powerful SQL backup compression that is comparable to storing more than a terabyte of data on a single USB thumb drive. The result is a unique backup and recovery approach, unmatched in flexibility, that greatly reduces backup times, creates a significantly smaller storage footprint, and maintains a high level of recoverability.

LiteSpeed provides an enterprise view of the backup and recovery environment through an intuitive user interface, scripting backup and recovery commands via T-SQL, or a fully functional command line executable. LiteSpeed offers flexible backup and recovery options, including restoration of individual database objects, simple data migration to any SQL Server, and allows for enterprise-wide deployment and upgrades through its remote installation capability

### LiteSpeed with SmartDiff vs. Native



### LiteSpeed for SQL Server Features and Benefits:

**SmartDiff Backup:** Reduces backup size substantially for huge storage savings and decreases backup times significantly from hours to minutes while allowing users to maintain a high level of recovery without compromising security.

**Backup Analyzer:** Allows users to test LiteSpeed parameters and backup locations. Every environment has unique challenges and the Backup Analyzer lets users expand the tuning capabilities with just a few clicks.

**Encryption:** Offers nine embedded encryption levels that are applied to data concurrent with the backup process.

**Database Categorization:** Categorizes databases according to user specifications (PROD, DEV, TEST). It also allows user to define categories and to choose desired global views.

## System Requirements

### Operating System:

- Windows 2008
- Windows 2003
- Windows 2000 (Service Pack 4)
- Windows XP
- Windows Vista

### Database Server:

- SQL Server 2008
- SQL Server 2005
- SQL Server 2000 (Service Pack 4)
- SQL Server 7.0 (Service Pack 4)

### Awards for LiteSpeed for SQL Server

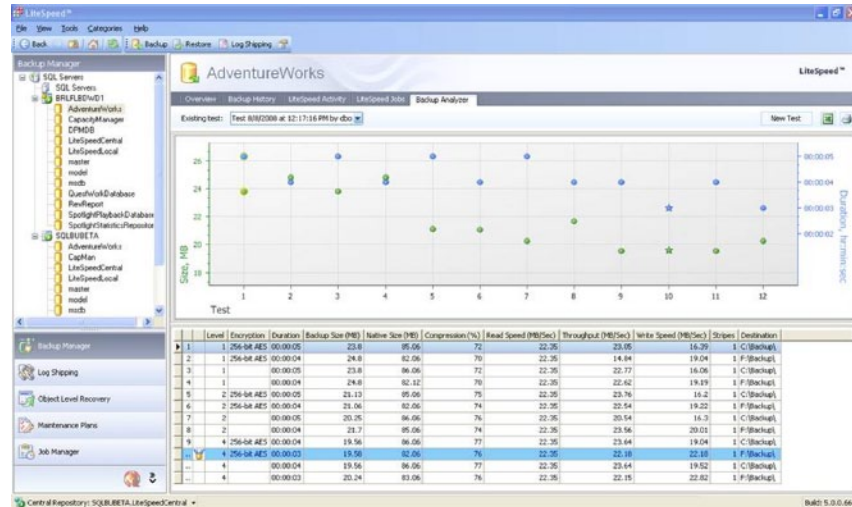


**Centralized Reporting:** Supplies convenient, consolidated reports. Users can avoid checking each server one by one for failures by creating a single report for failures, throughput and compression rates.

**Double-Click Restore (exclusive):** Allows users to create a database backup file that can be restored simply by double-clicking the backup file. Users can create portable backup files and further reduce restore times in a disaster recovery scenario. LiteSpeed is the only SQL backup solution to offer this feature.

**Log Shipping Management:** Allows users to easily configure and monitor both LiteSpeed and native log shipping plans. This capability to visually monitor log shipping includes all relevant latency alerting and lets users easily add and remove subscribers on demand.

**Log Reader:** Recovers data stored in transaction log files by rolling back any operation and reconstructing transactions. Users can view and browse the online transaction log as well as LiteSpeed and native T-Log backups.



Configure and run all of your SQL Server backup and recovery operations from an easy-to-use graphical interface.

**Object-Level Recovery:** Allows users the flexibility to restore individual objects from LiteSpeed and native backup files. Users can restore tables, schema and rows.

**Attached File Backup (exclusive):** Enables users to attach relevant documentation to their database archives. Attached files can be restored individually or along with the database as part of the recovery operation. LiteSpeed is the only SQL backup solution to offer this feature.

**Backup Mirroring:** Allows users to write a single backup to multiple locations simultaneously, eliminating the need to make individual copies. LiteSpeed's backup mirroring is available on both SQL Server Standard and Enterprise Editions.

**LiteSpeed Maintenance Plans:** Lets users craft maintenance plans with all the options of the native tool, regardless of how simple or complex the plans are. LiteSpeed adds compression, encryption, attached files, mirrored backups, TSM integration and SmartDiff backup management.

**Tivoli Storage Manager (TSM) Integration:** Schedules jobs and builds maintenance plans that can write directly to TSM without the need for an additional agent.

### About Quest Software, Inc.

Quest Software, Inc., a leading enterprise systems management vendor, delivers innovative products that help organizations get more performance and productivity from their applications, databases, Windows infrastructure and virtual environments. Through a deep expertise in IT operations and a continued focus on what works best, Quest helps more than 90,000 customers worldwide meet higher expectations for enterprise IT. Quest provides customers with client management as well as server and desktop virtualization solutions through its subsidiaries, ScriptLogic and Vizioncore. Quest Software can be found in offices around the globe and at [www.quest.com](http://www.quest.com).