

# Benchmark Factory® for Databases

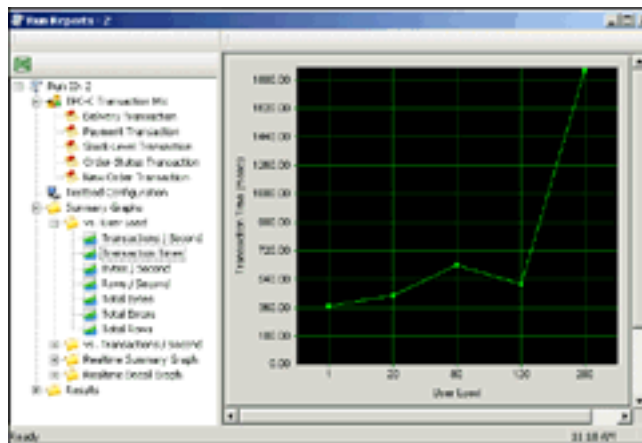
AUTOMATED LOAD TESTING SOLUTION DECREASES COST AND INCREASES ACCURACY OF HARDWARE AND SOFTWARE CONFIGURATION, SCALABILITY AND CAPACITY PLANNING

- Uses industry standard benchmarks such as TPC-B, TPC-C and ASP3AP
- Determines server scalability with goal testing
- Evaluate Oracle RAC configurations and determine number of nodes in Oracle RAC
- Offers complete and load test database application code

Inaccurate systems configuration assessment results in unused hardware and a financial loss for many companies. Companies that do properly test new, upgraded or migrated applications are faced with time-consuming processes, inaccurate methods and sub-standard testing tools. Due to improper configuration or testing, many companies are not getting the most from their IT investments and have customers and end users who are frustrated by poor application performance.

Benchmark Factory for Databases provides automated load testing to determine accurate production database (Oracle, SQL-Server, DB2, Sybase and MySQL) hardware and software configuration, scalability and application code (SQL, PL/SQL, T-SQL) functionality using industry standard benchmarks and Real Workload Simulation. Benchmark Factory for Databases also helps identify production bottlenecks, database migration/upgrade impact and correct Oracle 10g RAC node configuration and insures application performance.

- Accurately determine hardware and software configuration, scalability and planed capacity through database load testing
- Simulate real-world application workloads by generating load with industry standard benchmarks such as TPC-B, TPC-C and ASP3AP
- Functional load testing of database application code
- Rapid and accurate configuration for Oracle RAC environments



Easily generate and view database load results.

## Standard Benchmarks

Benchmark Factory for Databases simulates real database application workloads by generating load using out-of-the-box industry standard benchmarks such as TPC-D, ASP3AP and others. It enables users to evaluate scalability of database, test hardware and configurations. It also determines system throughput and capacity for the database system. Standard Benchmarks provide a truth comparison between different environments, database platforms or hardware.



# Benchmark Factory® for Databases

AUTOMATED LOAD TESTING SOLUTION DECREASES COST AND INCREASES ACCURACY OF HARDWARE AND SOFTWARE CONFIGURATION, SCALABILITY AND CAPACITY PLANNING

## System Requirements

### Benchmark Factory Console

- Pentium 160 MHz or greater  
(Pentium II recommended)
- 64 MB RAM
- 100 MB free disk space
- Windows 2000/2003/XP
- Supported Platforms:  
Windows 2000/XP/ 2003

### Agent

- Pentium 100 MHz or greater
- 64 MB RAM
- Windows 2000/2003/XP

### Supported Databases Versions on Any Hardware Platform

- Oracle: 7, 8, 8i, 9i, 9.2, and 10g
- SQL Server: 7 and 2000
- Sybase: 10, 11, and 12
- DB2 UDB: 7 and 8

For more information about Benchmark Factory for Databases or other Quest Software products, please call 949.754.8000 or visit us at [www.quest.com](http://www.quest.com).



Please refer to our Web site for regional and international office information.

## Database Workload Generation

Simulate production workload by replaying database activity under different concurrent user configurations. Benchmark Factory for Databases can replay workload from Oracle Performance Views, Oracle Trace Files, SQL Server Trace Files and by importing files with SQL scripts. This empowers users with the ability to understand future performance problems and do what-if analysis of different number of concurrent user transactions.

## Rapid and Accurate Configuration for Oracle RAC Environments

When deploying Oracle Real Application Cluster (RAC) environments, one of the challenges is to determine the right number of RAC nodes that should be deployed for a given application or database while minimizing the implementation and maintenance cost of RAC environments. Benchmark Factory for Databases generates workload or replays real production activity against different number of RAC nodes. Load can be balanced among the different nodes. Without Benchmark Factory for Databases the process of setting up the right number of RAC nodes is a trial and error process without real metrics. With this type of detail, companies could save significant unnecessary costs when implementing Oracle RAC environments by accurately determining the specific number of nodes needed to meet the scalability and performance requirements for their applications.

## Real World Latencies

Database managers require realistic transaction rates during the workload testing process. Benchmark Factory for Databases provides three separate methods to throttle transaction rates.

- **Keying Time** creates a delay before a transaction executes, simulating activities such as data entry that a user performs before executing the transaction.
- **Think Time** creates a delay after a transaction executes, simulating a user's decision-making process before a user proceeds to the next transaction.
- **Inter-arrival Time** derives its name from achieving a specific transaction rate as seen by a server (the rate at which transactions are arriving to a server). When specifying Inter-arrival Time, Benchmark Factory is instructed to ensure that the transactions arrive to the server at a specific interval, regardless of how long a transaction actually takes to execute.

## About Quest

Quest Software, Inc. delivers innovative products that help organizations get more performance and productivity from their applications, databases and infrastructure. Through a deep expertise in IT operations and a continued focus on what works best, Quest helps more than 18,000 customers worldwide meet higher expectations for enterprise IT. Quest Software, headquartered in Irvine, Calif., can be found in offices around the globe and at [www.quest.com](http://www.quest.com).

©2005 Quest Software, Inc. All rights reserved. Benchmark Factory is a registered trademark of Quest Software. All other brand or product names are trademarks or registered trademarks of their respective companies. Part No. DBM-BNF-DS-BH\_0305