



Quest[®] Deployment Manager 2.0

for SharePoint

What's New

**© 2011 Quest Software, Inc.
ALL RIGHTS RESERVED.**

This document contains proprietary information protected by copyright. The software described in this document is furnished under a software license or nondisclosure agreement. This software may be used or copied only in accordance with the terms of the applicable agreement. No part of this guide may be reproduced or transmitted in any form or by any means, electronic or mechanical, including photocopying and recording for any purpose other than the purchaser's personal use without the written permission of Quest Software, Inc.

The information in this document is provided in connection with Quest products. No license, express or implied, by estoppel or otherwise, to any intellectual property right is granted by this document or in connection with the sale of Quest products. **EXCEPT AS SET FORTH IN QUEST'S TERMS AND CONDITIONS AS SPECIFIED IN THE LICENSE AGREEMENT FOR THIS PRODUCT, QUEST ASSUMES NO LIABILITY WHATSOEVER AND DISCLAIMS ANY EXPRESS, IMPLIED OR STATUTORY WARRANTY RELATING TO ITS PRODUCTS INCLUDING, BUT NOT LIMITED TO, THE IMPLIED WARRANTY OF MERCHANTABILITY, FITNESS FOR A PARTICULAR PURPOSE, OR NON-INFRINGEMENT. IN NO EVENT SHALL QUEST BE LIABLE FOR ANY DIRECT, INDIRECT, CONSEQUENTIAL, PUNITIVE, SPECIAL OR INCIDENTAL DAMAGES (INCLUDING, WITHOUT LIMITATION, DAMAGES FOR LOSS OF PROFITS, BUSINESS INTERRUPTION OR LOSS OF INFORMATION) ARISING OUT OF THE USE OR INABILITY TO USE THIS DOCUMENT, EVEN IF QUEST HAS BEEN ADVISED OF THE POSSIBILITY OF SUCH DAMAGES.** Quest makes no representations or warranties with respect to the accuracy or completeness of the contents of this document and reserves the right to make changes to specifications and product descriptions at any time without notice. Quest does not make any commitment to update the information contained in this document.

If you have any questions regarding your potential use of this material, contact:

Quest Software World Headquarters
LEGAL Dept
5 Polaris Way
Aliso Viejo, CA 92656
Email: legal@quest.com

Refer to our website (www.quest.com) for regional and international office information.

TRADEMARKS

Quest, Quest Software, the Quest Software logo, <add any other Quest marks mentioned in this document> are trademarks and registered trademarks of Quest Software, Inc in the United States of America and other countries. For a complete list of Quest Software's trademarks, please see <http://www.quest.com/legal/trademark-information.aspx>. Other trademarks and registered trademarks are property of their respective owners.

Quest Deployment Manager for SharePoint
Updated – October 2011
Software version – 2.0

CONTENTS

- What's New in Deployment Manager for SharePoint 2.0 3**
 - Solutions Manager 3
 - Profile Manager 5
- About Quest Software, Inc. 6**
 - Contacting Quest Software 6
 - Contacting Quest Support 6

What's New in Deployment Manager for SharePoint 2.0

The new version of Quest Deployment Manager for SharePoint is extending the site and content deployment capabilities of version 1.0 with SharePoint solutions deployment and management features. It also includes enhancements to the core Deployment Manager functionality.

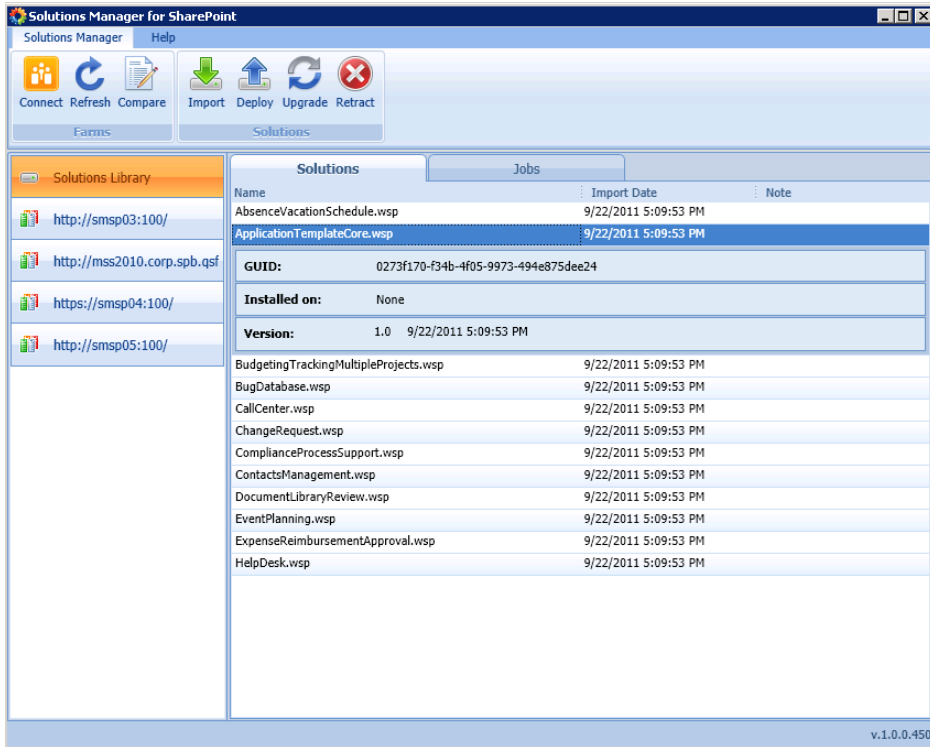
Solutions Manager

The new Solutions Manager tool within Quest Deployment Manager for SharePoint simplifies solution management in multi-tiered SharePoint 2010 environments. With Solutions Manager administrators can:

- Maintain a central version-enabled repository for managed SharePoint solutions (Solutions Library)
- Understand which farms/web applications each managed solution is deployed to
- List solutions installed on each farm or on multiple farms at once
- Identify solutions that were not approved for deployment
- Detect farms with old or unknown versions of managed solutions
- Deploy, upgrade and retract solution packages remotely from a single application

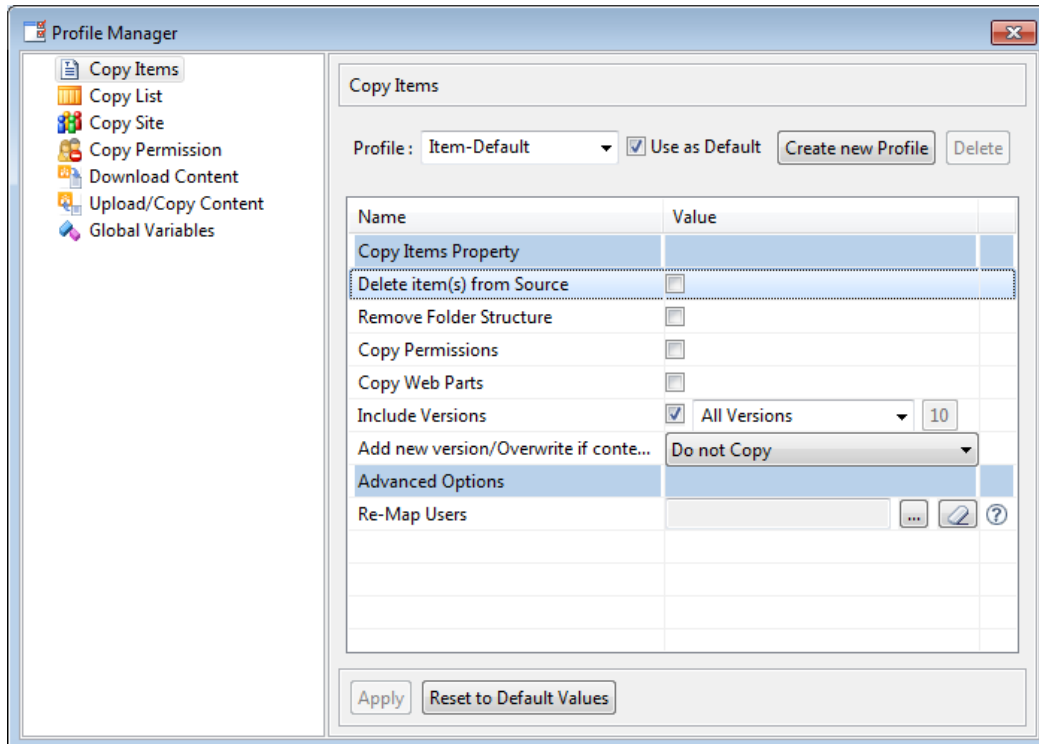
Quest Deployment Manager for SharePoint 2.0

- Execute tasks immediately or schedule them to run at a later time
- Keep a historical trail of all solution deployment activities



Profile Manager

Deployment Manager for SharePoint includes a wide variety of user-selectable settings and options to finely control deployment tasks. It is important to ensure that settings are used consistently across multiple deployment tasks. Profile Manager enables you to create reusable settings profiles that can be selected in each deployment wizard to easily set all the necessary options.



About Quest Software, Inc.

Quest simplifies and reduces the cost of managing IT for more than 100,000 customers worldwide. Our innovative solutions make solving the toughest IT management problems easier, enabling customers to save time and money across physical, virtual and cloud environments. For more information about Quest, go to www.quest.com.

Contacting Quest Software

Email info@quest.com
Mail Quest Software, Inc.
 World Headquarters
 5 Polaris Way
 Aliso Viejo, CA 92656
 USA
Web site www.quest.com

Refer to our Web site for regional and international office information.

Contacting Quest Support

Quest Support is available to customers who have a trial version of a Quest product or who have purchased a Quest product and have a valid maintenance contract. Quest Support provides unlimited 24x7 access to SupportLink, our self-service portal. Visit SupportLink at <http://support.quest.com/>

From SupportLink, you can do the following:

- Retrieve thousands of solutions from our online Knowledgebase
- Download the latest releases and service packs
- Create, update and review Support cases

View the *Global Support Guide* for a detailed explanation of support programs, online services, contact information, policies and procedures.

The guide is available at: <http://support.quest.com>.