



Quest[®] Migration Suite 4.3

for SharePoint

What's New

© 2012 Quest Software, Inc. ALL RIGHTS RESERVED.

This document contains proprietary information protected by copyright. The software described in this document is furnished under a software license or nondisclosure agreement. This software may be used or copied only in accordance with the terms of the applicable agreement. No part of this guide may be reproduced or transmitted in any form or by any means, electronic or mechanical, including photocopying and recording for any purpose other than the purchaser's personal use without the written permission of Quest Software, Inc.

The information in this document is provided in connection with Quest products. No license, express or implied, by estoppel or otherwise, to any intellectual property right is granted by this document or in connection with the sale of Quest products. **EXCEPT AS SET FORTH IN QUEST'S TERMS AND CONDITIONS AS SPECIFIED IN THE LICENSE AGREEMENT FOR THIS PRODUCT, QUEST ASSUMES NO LIABILITY WHATSOEVER AND DISCLAIMS ANY EXPRESS, IMPLIED OR STATUTORY WARRANTY RELATING TO ITS PRODUCTS INCLUDING, BUT NOT LIMITED TO, THE IMPLIED WARRANTY OF MERCHANTABILITY, FITNESS FOR A PARTICULAR PURPOSE, OR NON-INFRINGEMENT. IN NO EVENT SHALL QUEST BE LIABLE FOR ANY DIRECT, INDIRECT, CONSEQUENTIAL, PUNITIVE, SPECIAL OR INCIDENTAL DAMAGES (INCLUDING, WITHOUT LIMITATION, DAMAGES FOR LOSS OF PROFITS, BUSINESS INTERRUPTION OR LOSS OF INFORMATION) ARISING OUT OF THE USE OR INABILITY TO USE THIS DOCUMENT, EVEN IF QUEST HAS BEEN ADVISED OF THE POSSIBILITY OF SUCH DAMAGES.** Quest makes no representations or warranties with respect to the accuracy or completeness of the contents of this document and reserves the right to make changes to specifications and product descriptions at any time without notice. Quest does not make any commitment to update the information contained in this document.

If you have any questions regarding your potential use of this material, contact:

Quest Software World Headquarters
LEGAL Dept
5 Polaris Way
Aliso Viejo, CA 92656
Email: legal@quest.com

Refer to our website www.quest.com for regional and international office information.

TRADEMARKS

Quest, Quest Software and the Quest Software logo are trademarks and registered trademarks of Quest Software, Inc in the United States of America and other countries. For a complete list of Quest Software's trademarks, please see <http://www.quest.com/legal/trademark-information.aspx>. Other trademarks and registered trademarks are property of their respective owners.

For More Information

Get the latest product information, find helpful resources, test the product betas, and join a discussion with the Quest team and other community members. Join the SharePoint Team Community at <http://communities.quest.com/community/sharepointforall/>

Quest Migration Suite for SharePoint
Version 4.3
Last updated – August 20, 2012

Contents

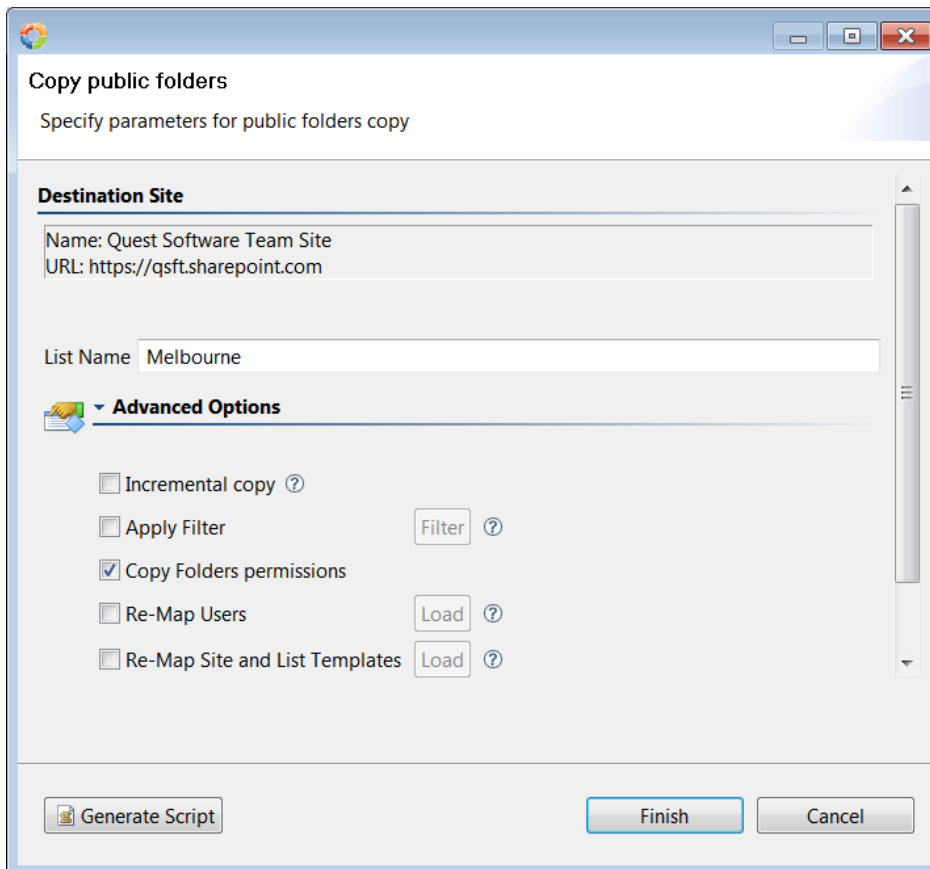
- What's new in Migration Suite for SharePoint 4.3 4**
 - Migration of Exchange Public Folder Permissions..... 4
 - Migration of File Share Permissions..... 5
 - Deferred SharePoint Group Copy 6
 - Configurable Mapping for Missing Users 6
 - Support for Content Approval 7
 - Password Manager..... 7
- About Quest Software, Inc. 8**
 - Contacting Quest Software..... 8
 - Contacting Quest Support 8

What's new in Migration Suite for SharePoint 4.3

This document describes the new features and enhancements of Migration Suite for SharePoint.

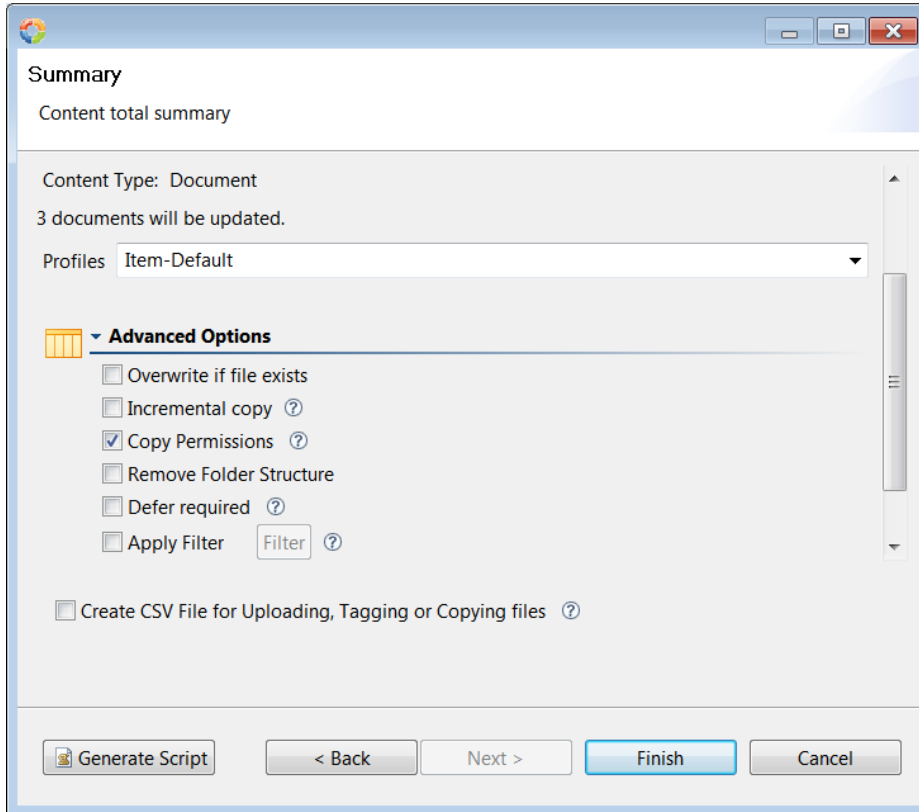
Migration of Exchange Public Folder Permissions

To simplify transition of public folder users to SharePoint, the new version provides an option to migrate Exchange folder security to SharePoint lists and folders. When you choose to migrate folder permissions, the application maps both standard and custom permissions to the out-of-the-box SharePoint permission levels (Full Control, Contribute, etc.).



Migration of File Share Permissions

The new version supports mapping source NTFS folder permissions to migrated folders in SharePoint. When you choose to copy folder permissions for a file migration task, the application translates standard NTFS permissions to the out-of-the-box SharePoint permission levels (Full Control, Contribute, etc).

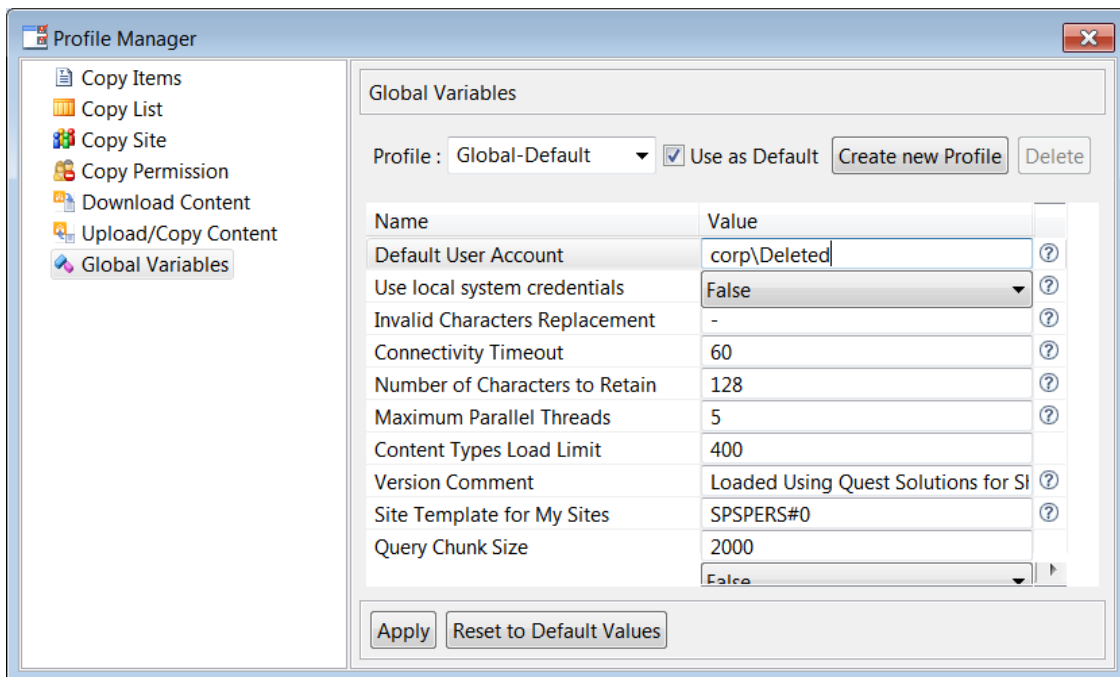


Deferred SharePoint Group Copy

In addition to the default SharePoint group copy mode where the application copies all groups defined in the source site collection, the new release enables selective migration of SharePoint groups. When the Deferred Group Copy option is selected, only groups that have direct permissions in the migration scope will be copied. This option is particularly useful for the sub-site promotion scenario where a sub-site is migrated to a new site collection.

Configurable Mapping for Missing Users

When migrating a document, list item, file or a message that was created or edited by a user whose account has since been removed or disabled, the Created By/Modified By fields are set to your SharePoint connection account by default. You can map such users to a different account by specifying it in the Default User Account global variable in Profile Manager:



Support for Content Approval

This version adds support for migration of approval status and comments for SharePoint lists and libraries with enabled content approval. Due to SharePoint API limitations, you can preserve either Created/Modified metadata (default setting) or approval status. You can also use in-place tagging to approve/reject items in bulk:

Modified At <Set by SharePoint>

Created By <Set by SharePoint>

Modified By <Set by SharePoint>

Approval Status

Approval Comments

Approved

Rejected

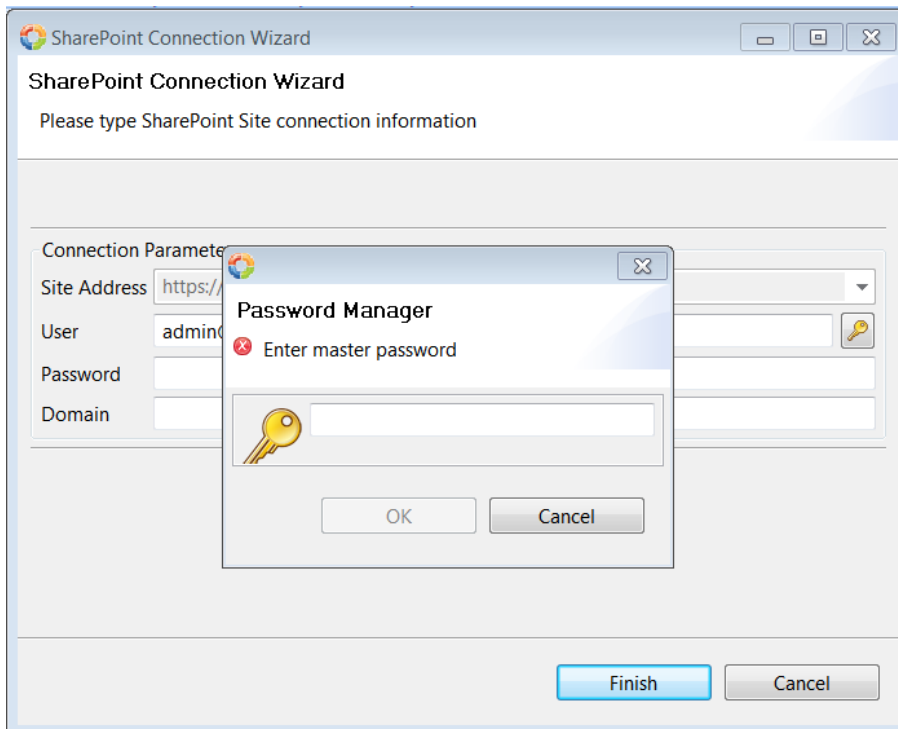
Pending

* indicates a required field

Save Template Load Template

Password Manager

The new Password Manager feature connects you to your SharePoint sites automatically without entering a password for each connection when the application is restarted. The connection credentials are stored securely on the computer and protected with a master password.



About Quest Software, Inc.

Established in 1987, Quest Software (Nasdaq: QSFT) provides simple and innovative IT management solutions that enable more than 100,000 global customers to save time and money across physical and virtual environments. Quest products solve complex IT challenges ranging from [database management](#), [data protection](#), [identity and access management](#), [monitoring](#), [user workspace management](#) to [Windows management](#). For more information, visit www.quest.com.

Contacting Quest Software

Email info@quest.com

Mail Quest Software, Inc.
World Headquarters
5 Polaris Way
Aliso Viejo, CA 92656
USA

Web site www.quest.com

Refer to our Web site for regional and international office information.

Contacting Quest Support

Quest Support is available to customers who have a trial version of a Quest product or who have purchased a Quest product and have a valid maintenance contract. Quest Support provides unlimited 24x7 access to our Support Portal at www.quest.com/support

From our Support Portal, you can do the following:

- Retrieve thousands of solutions from our online Knowledge Base
- Download the latest releases and service packs
- Create, update and review Support cases

View the *Global Support Guide* for a detailed explanation of support programs, online services, contact information, policies and procedures.

The guide is available at: www.quest.com/support.