

Quest[®] Migration Solutions for SharePoint

What's New

Migration Suite for SharePoint v4.5

© 2013 Quest Software, Inc. ALL RIGHTS RESERVED.

This document contains proprietary information protected by copyright. The software described in this document is furnished under a software license or nondisclosure agreement. This software may be used or copied only in accordance with the terms of the applicable agreement. No part of this guide may be reproduced or transmitted in any form or by any means, electronic or mechanical, including photocopying and recording for any purpose other than the purchaser's personal use without the written permission of Quest Software, Inc.

The information in this document is provided in connection with Quest products. No license, express or implied, by estoppel or otherwise, to any intellectual property right is granted by this document or in connection with the sale of Quest products. **EXCEPT AS SET FORTH IN QUEST'S TERMS AND CONDITIONS AS SPECIFIED IN THE LICENSE AGREEMENT FOR THIS PRODUCT, QUEST ASSUMES NO LIABILITY WHATSOEVER AND DISCLAIMS ANY EXPRESS, IMPLIED OR STATUTORY WARRANTY RELATING TO ITS PRODUCTS INCLUDING, BUT NOT LIMITED TO, THE IMPLIED WARRANTY OF MERCHANTABILITY, FITNESS FOR A PARTICULAR PURPOSE, OR NON-INFRINGEMENT. IN NO EVENT SHALL QUEST BE LIABLE FOR ANY DIRECT, INDIRECT, CONSEQUENTIAL, PUNITIVE, SPECIAL OR INCIDENTAL DAMAGES (INCLUDING, WITHOUT LIMITATION, DAMAGES FOR LOSS OF PROFITS, BUSINESS INTERRUPTION OR LOSS OF INFORMATION) ARISING OUT OF THE USE OR INABILITY TO USE THIS DOCUMENT, EVEN IF QUEST HAS BEEN ADVISED OF THE POSSIBILITY OF SUCH DAMAGES.** Quest makes no representations or warranties with respect to the accuracy or completeness of the contents of this document and reserves the right to make changes to specifications and product descriptions at any time without notice. Quest does not make any commitment to update the information contained in this document.

If you have any questions regarding your potential use of this material, contact:

Quest Software World Headquarters
LEGAL Dept
5 Polaris Way
Aliso Viejo, CA 92656
Email: legal@quest.com

Refer to our website www.quest.com for regional and international office information.

TRADEMARKS

Quest, Quest Software and the Quest Software logo are trademarks and registered trademarks of Quest Software, Inc in the United States of America and other countries. For a complete list of Quest Software's trademarks, please see <http://www.quest.com/legal/trademark-information.aspx>. Other trademarks and registered trademarks are property of their respective owners.

For More Information

Get the latest product information, find helpful resources, test the product betas, and join a discussion with the Quest team and other community members. Join the SharePoint Team Community at <http://communities.quest.com/community/sharepointforall/>

Quest Migration Suite for SharePoint
Version 4.5
Last updated – May, 2013

Contents

- What's new in Migration Suite for SharePoint 4.5 4**
 - Extended Workflow Migration in SharePoint 2013..... 4
 - Improved Site Compare..... 5
 - Simplified Office 365 Migration..... 5
 - Seamless Conflict Resolution..... 6
 - New Troubleshooting Options 6
 - Other New Features and Enhancements 6
- About Quest Software, Inc. 8**
 - Contacting Quest Software..... 8
 - Contacting Quest Support 8

What's new in Migration Suite for SharePoint 4.5

This release includes many new features and enhancements that address customer feedback, add support for specific SharePoint configurations and migration scenarios and improve usability.

Extended Workflow Migration in SharePoint 2013

Migrate legacy out-of-the-box and SharePoint Designer workflows to SharePoint 2013. You can copy lists and reusable and site workflows from SharePoint 2007 or 2010 to SharePoint 2013 and SharePoint Online. Once on the new version, you can copy SharePoint 2013 workflows easily between SharePoint 2013 locations.

Improved Site Compare

The Site Compare feature gets even better with version 4.5. Migration Suite for SharePoint enables you to compare documents based on their Modified time, and new color coding helps you easily identify which location has an older version of the document. You can also optionally identify differences in permissions of SharePoint items.

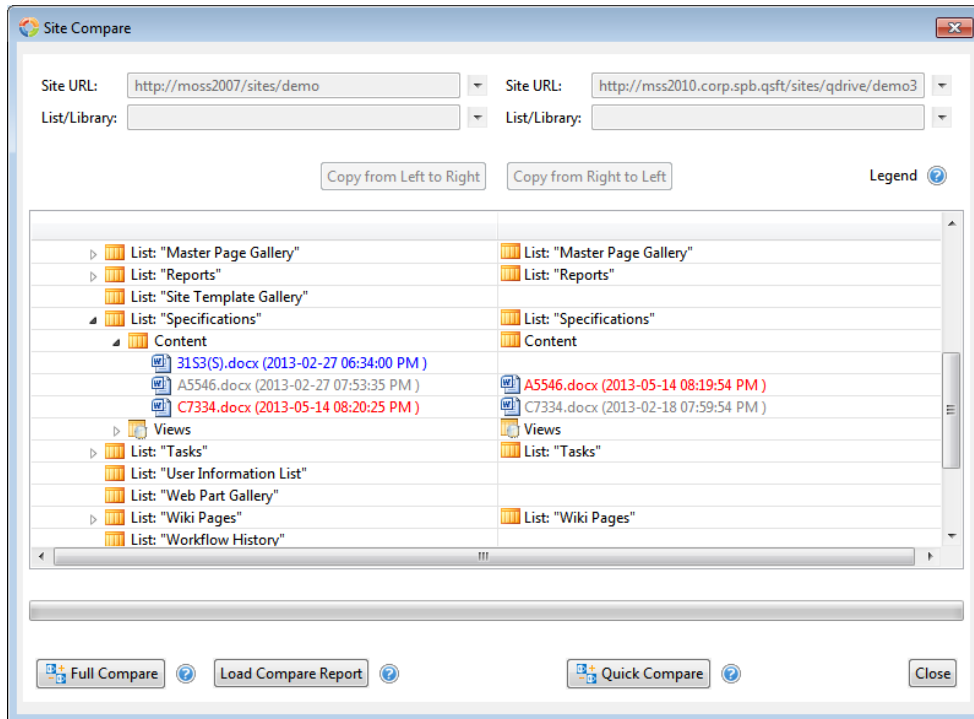


Figure 1: Site Compare now offers color coding to help you easily identify which documents are outdated.

Before you begin your project, you can also run a full comparison of large site collections in the background to help verify migration results upon completion. Site Compare generates a snapshot of the differences between sites (including sub-sites), and that snapshot can be used post-migration to synchronize the identified differences.

Simplified Office 365 Migration

Excited about the new version of Office 365? Migration Suite for SharePoint 4.5 makes migrations to SharePoint Online fast and easy.

- Use the site collection discovery tool to quickly connect to site collections in your Office 365 subscription
- Provision new site collections in Office 365 on the fly during migration
- Connect directly to certain federated configurations of Office 365 to remove the requirement for the browser connection technique

Seamless Conflict Resolution

Migration Suite offers new options that help avoid naming conflicts when migrating data to SharePoint:

- Specify a replacement for any character or file name endings that are not compatible with SharePoint using the Invalid Characters and Invalid Name Endings options in Profile Manager
- Append suffixes to the items copied from Exchange Public Folders to SharePoint libraries to enforce uniqueness of the content
- Overwrite the same message if it already exists in the destination when copying Exchange Public Folder content to SharePoint

New Troubleshooting Options

- Open the online help page from the connection error message dialog that explains the error and resolution options
- Control the maximum number of lookup columns that could be retrieved from the list in one query using the Global Profile parameter Lookup Threshold
- Save Workflows and Workflow Associations to the transferable file to troubleshoot Workflow display and copy operations
- Added the marker field to the HTTP header of all communication packages sent by the software to SharePoint servers to simplify firewall rules configuration
- Re-order content in the operation log viewer to group errors by the error categories in order to analyze the result of the application function more efficiently
- Control the delay between list query retrieving chunk pages from the long lists to address the issues with network security handling large volume or large frequency requests
- Re-process failed items after the copy operation for SharePoint non-document items

Other New Features and Enhancements

- Map site languages when copying sites or site collections. Language mapping should be configured using existing site and list template mapping functionality
- Copy documents from SharePoint document libraries to non-document lists attaching the documents as attachments and mapping metadata
- Specify a date range for all time-based filtering conditions
- Mass tag folders in SharePoint lists to enhance or map folder metadata or to change folder content type including the ability to convert folders to document sets
- The document extension filter now supports multiple extensions when displaying and copying content from SharePoint locations
- Specify the time interval for an incremental copy on the site, list or items copy wizard without the need to define the copy filter

- Map the hidden unique list item ID to another field during item copy between SharePoint locations
- Added integration with Windows Scheduler on Windows Server 2008
- Added support for custom fields when copying content between SharePoint discussion board lists
- Map values from the Microsoft Office documents Revision Number, Last Printed, Last Saved, and Application Name fields
- Remove folder structure when copying libraries between SharePoint locations using interactive GUI or command line scripts

About Quest Software, Inc.

Established in 1987, Quest Software (Nasdaq: QSFT) provides simple and innovative IT management solutions that enable more than 100,000 global customers to save time and money across physical and virtual environments. Quest products solve complex IT challenges ranging from [database management](#), [data protection](#), [identity and access management](#), [monitoring](#), [user workspace management](#) to [Windows management](#). For more information, visit www.quest.com.

Contacting Quest Software

Email info@quest.com

Mail Quest Software, Inc.
World Headquarters
5 Polaris Way
Aliso Viejo, CA 92656
USA

Web site www.quest.com

Refer to our Web site for regional and international office information.

Contacting Quest Support

Quest Support is available to customers who have a trial version of a Quest product or who have purchased a Quest product and have a valid maintenance contract. Quest Support provides unlimited 24x7 access to our Support Portal at www.quest.com/support

From our Support Portal, you can do the following:

- Retrieve thousands of solutions from our online Knowledge Base
- Download the latest releases and service packs
- Create, update and review Support cases

View the *Global Support Guide* for a detailed explanation of support programs, online services, contact information, policies and procedures.

The guide is available at: www.quest.com/support.

Migration Suite for SharePoint does not conform to the typical Quest product lifecycle pattern outlined in the Global Support Guide. Only the current version (n) of this product will be considered to be fully supported. However, limited support is still available for the version previous to the current (n-1). See the [Software Product Support Lifecycle Policy](#) for support level definitions.