

Migration Suite for SharePoint 4.6

What's New



**© 2013 Dell Inc.
ALL RIGHTS RESERVED.**

This guide contains proprietary information protected by copyright. The software described in this guide is furnished under a software license or nondisclosure agreement. This software may be used or copied only in accordance with the terms of the applicable agreement. No part of this guide may be reproduced or transmitted in any form or by any means, electronic or mechanical, including photocopying and recording for any purpose other than the purchaser's personal use without the written permission of Dell Inc.

The information in this document is provided in connection with Dell products. No license, express or implied, by estoppel or otherwise, to any intellectual property right is granted by this document or in connection with the sale of Dell products. EXCEPT AS SET FORTH IN THE TERMS AND CONDITIONS AS SPECIFIED IN THE LICENSE AGREEMENT FOR THIS PRODUCT, DELL ASSUMES NO LIABILITY WHATSOEVER AND DISCLAIMS ANY EXPRESS, IMPLIED OR STATUTORY WARRANTY RELATING TO ITS PRODUCTS INCLUDING, BUT NOT LIMITED TO, THE IMPLIED WARRANTY OF MERCHANTABILITY, FITNESS FOR A PARTICULAR PURPOSE, OR NON-INFRINGEMENT. IN NO EVENT SHALL DELL BE LIABLE FOR ANY DIRECT, INDIRECT, CONSEQUENTIAL, PUNITIVE, SPECIAL OR INCIDENTAL DAMAGES (INCLUDING, WITHOUT LIMITATION, DAMAGES FOR LOSS OF PROFITS, BUSINESS INTERRUPTION OR LOSS OF INFORMATION) ARISING OUT OF THE USE OR INABILITY TO USE THIS DOCUMENT, EVEN IF DELL HAS BEEN ADVISED OF THE POSSIBILITY OF SUCH DAMAGES. Dell makes no representations or warranties with respect to the accuracy or completeness of the contents of this document and reserves the right to make changes to specifications and product descriptions at any time without notice. Dell does not make any commitment to update the information contained in this document.

If you have any questions regarding your potential use of this material, contact:

Dell Inc..
Attn: LEGAL Dept
5 Polaris Way
Aliso Viejo, CA 92656

Refer to our Web site (software.dell.com) for regional and international office information.

Trademarks

Dell, the Dell logo are trademarks of Dell Inc. and/or its affiliates. Other trademarks and trade names may be used in this document to refer to either the entities claiming the marks and names or their products. Dell disclaims any proprietary interest in the marks and names of others.

Legend



CAUTION: A CAUTION icon indicates potential damage to hardware or loss of data if instructions are not followed.



WARNING: A WARNING icon indicates a potential for property damage, personal injury, or death.



MOBILE: A MOBILE icon indicates that the functionality is available in a mobile application.



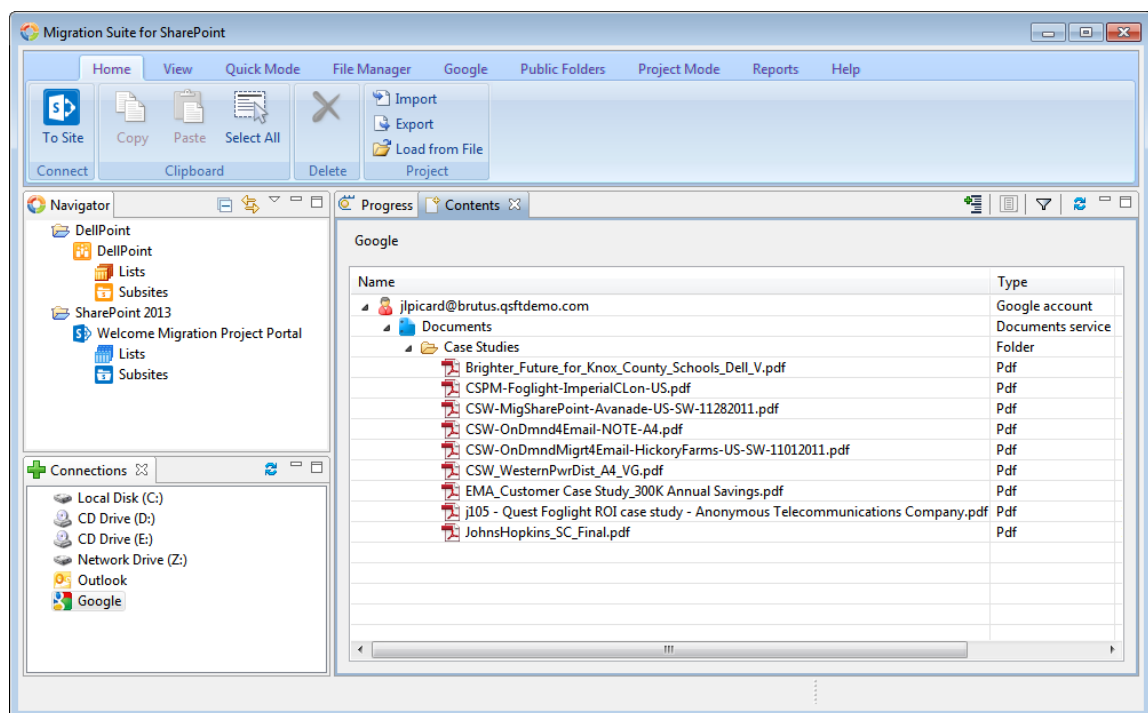
VIDEO: A VIDEO icon indicates that an instructional video is available.

What's New
Updated - October 2013
Software Version - 4.6

Support for Google Drive

With Migration Suite for SharePoint 4.6, you can move your Google Drive content in bulk quickly and easily to Office 365, SkyDrive Pro and SharePoint 2013. The new Google Drive module will enable migration of files and documents from both enterprise and personal Google Drives, while retaining valuable metadata and permissions and minimizing data loss, downtime and business disruption.

- Reduce migration time and complexity using a simple drag-and-drop user interface
- Ensure a high fidelity migration by converting native Google documents (Docs, Sheets and Slides) to the Microsoft Office equivalent (Word, Excel and PowerPoint) on the fly during migration
- Preserve, reassign and add metadata to content as its migrated to make information easier to find and enhance its business value
- Map the security permissions of Google files and folders to SharePoint item and library level permissions automatically to ensure that users have suitable access to content
- Perform scripted bulk migrations to streamline and accelerate projects



Pre-migration Analysis

This release of Migration Manager for SharePoint includes a new pre-migration assessment feature that enables you to scan SharePoint sites and Windows files prior to migration to identify potential issues such as:

- missing or custom site templates, site features and web parts
- number of attached workflows and InfoPath forms
- number of checked out files in the source sites
- large lists and libraries
- files that are too large or one of the file types blocked on the target SharePoint site

The assessment report is created as a multi-page Excel spreadsheet listing all objects using color-coding so that you can immediately spot what needs to be fixed or may not migrate properly.

SharePoint Pre-migration Analysis

Source Location (e.g. <http://www.yoursharepoint.com/sites/yoursite>) : ?

<http://mss2010/sites/dellpoint> Connect

Target Location (e.g. <http://www.yoursharepoint.com/sites/yoursite>) : [Optional] ?

<http://sa8463/espc> Connect

Analyze using the following parameters :

☒ **Analyze Sites**

- ☒ Analyze Site Templates ?
- ☒ Analyze Site Features ?
- ☒ Analyze Site Web Parts ?
- ☒ Include Sub-sites ?

☒ **Analyze Lists**

- ☒ Total Items 5000 ?
- ☒ List Size Limitation (MB) 1000 ?

☐ **Analyze Items** (This option will slow down the analysis)

- ☐ Item Size Limitation (MB) 50 ?
- ☐ File Path Length 256 ?
- ☐ Blocked File Extensions ... ?

Finish Cancel

About Dell

Dell listens to customers and delivers worldwide innovative technology, business solutions and services they trust and value. For more information, visit www.software.dell.com.

Contacting Dell

Technical Support:
[Online Support](#)

Product Questions and Sales:
(800) 306 - 9329

Email:
info@software.dell.com

Contacting Support

Support is available to customers who have a trial version or who have purchased Dell software and have a valid maintenance contract. The Support Portal www.software.dell.com/support is the definitive resource for technical support with self-help capabilities so you can solve problems quickly and independently 24 hours a day, 365 days a year. The portal also provides direct access to our support engineers through an online service request facility. From one central location, you will find everything you need – support offerings, policies and procedures, contact information, as well as:

- Create, update, and manage Service Requests (cases)
- Knowledge Base
- Product notifications
- Software downloads¹
- How-to videos
- Community discussions
- Chat option

¹ For trial users please use the [Trial Downloads](#) to get the latest generally available version of the software.

Quest Software is now Dell.