

Active Administrator® for Active Directory Health

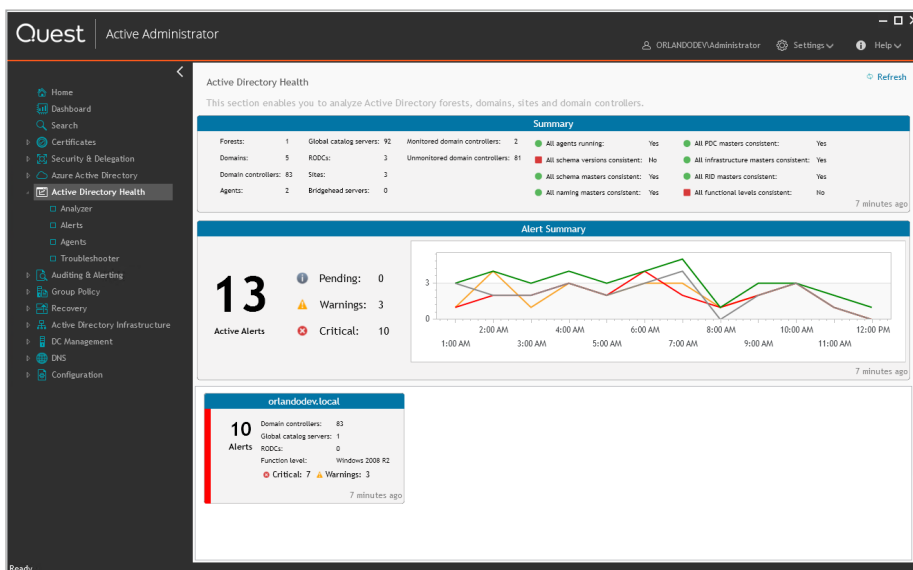
Real-time AD health and performance diagnostics tool

Active Directory (AD) issues can have wide-reaching effects, including system downtime, directory unavailability and end-user disruption. Yet, administrators have no easy way to identify resource bottlenecks, causing them to spend too much time troubleshooting and resolving problems in AD. And the addition of Azure AD to environments only intensifies these issues.

Quest® Active Administrator® for Active Directory Health ensures the health and availability of AD with troubleshooting and diagnostics tools that monitor performance to maintain user productivity. With Active Administrator for AD Health, you get real-time diagnostic data from a centralized dashboard, eliminating the learning curve so you can identify the root cause of AD problems before they impact users.

BENEFITS:

- Speeds AD problem resolution with immediate visual feedback on the status of individual domain controllers
- Easily identifies resource bottlenecks in real time
- Analyzes performance over time to detect performance trends before they impact users
- Provides health and performance alerts and related diagnostic data in a single console to proactively resolve AD problems
- Ensures changes sync accurately and efficiently to Azure AD



Quickly view the AD health, identify resource bottlenecks and drill down for details.

SYSTEM REQUIREMENTS

PROCESSOR

1GHz Pentium

DISK SPACE

100MB

OPERATING SYSTEMS

Windows 7 (32 or 64 bit)

Windows 8 (32 or 64 bit)

Windows 8.1 (32 or 64 bit)

Windows 10

Windows Server 2008

Windows Server 2008 R2 (32 or non-Itanium 64 bit)

Windows Server 2012

Windows Server 2012 R2

Windows Server 2016

SERVER INSTALLATION

Group Policy Management Console

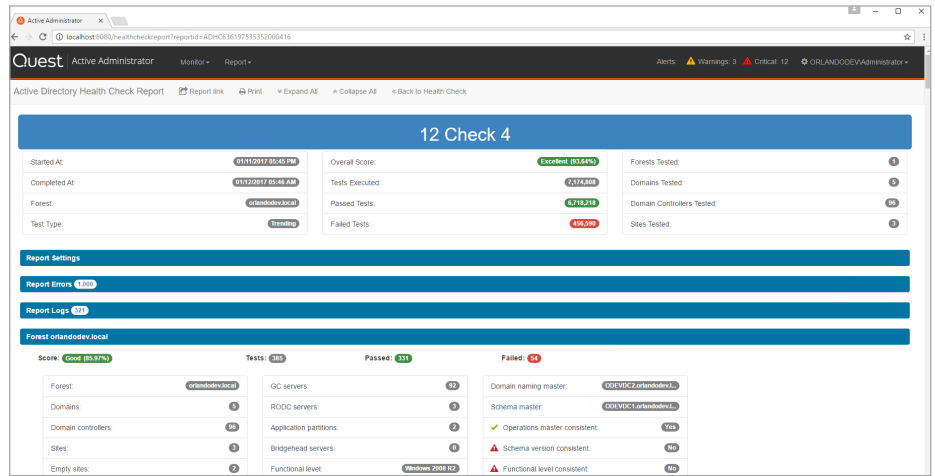
Microsoft SQL Server 2005, 2008, 2008 R2, 2012, 2014, 2016 and 2017

Microsoft SQL Express 2005, 2008, 2008 R2, 2012 and 2014

.NET Framework v.4.5.2 and 4.6

DETAILED REQUIREMENTS

See the [Release Notes](#) for the full list of system requirements.



Get on-demand diagnostic data from a centralized dashboard with Active Administrator for AD Health.

FEATURES

- **Centralized network operations view** — Get a centralized location where you can monitor your forests, domains, sites and domain controllers in the new Network Operations Center (NOC) view. Get a summary of data points, active alerts and detailed information on each domain, and set up unique profiles to view only the specific data you need. Active Administrator for AD Health also enables you to create topology diagrams for a visual representation of your network.
- **Azure AD Connect sync monitoring** — View the status of the syncs between AD to Azure AD Connect so you can stay on top of syncs without compromising productivity. Active Administrator for AD Health lets you view a list of the installed connectors, properties and partitions, and gives you the ability to run profiles of selected connectors.
- **Centralized diagnostic console** — Discover the flow of data from the network through a domain controller using visual flow charts, graphs and icons. In this consolidated view of system status, resource bottlenecks are highlighted in yellow and red, and you can drill down on alerts for further analysis.
- **Simplified AD health analysis** — Proactively monitor and diagnose critical, directory-wide infrastructure issues from replication latency to Domain Name System (DNS) inconsistencies. When a problem occurs, an alert notifies you immediately of the exact nature and location of the problem, saving you analysis and troubleshooting time. Following critical alerts, built-in or custom remediation actions run automatically to fix the problem.
- **Streamlined enterprise-wide troubleshooting** — Diagnose directory problems without server-by-server, test-by-test troubleshooting using a comprehensive set of troubleshooting tests and utilities. From domain controller health to DNS and replication, Active Administrator for AD Health isolates and repairs problems, and generates detailed reports for current use and historical reference.
- **Automated AD health checks and repairs** — Alleviate the pain of manual AD troubleshooting with more than 100 AD health check tests, including replication failure, queue length, DNS zone and SYSVOL consistency. Run multiple tests against selected domain controllers, sites, domains or naming contexts.

ABOUT QUEST

At Quest, our purpose is to solve complex problems with simple solutions. We accomplish this with a philosophy focused on great products, great service and an overall goal of being simple to do business with. Our vision is to deliver technology that eliminates the need to choose between efficiency and effectiveness, which means you and your organization can spend less time on IT administration and more time on business innovation.