

MessageStats®

Get visibility into on-premises Exchange and other UC systems

Exchange admins are overburdened with their on-premises deployments. It's their responsibility to keep production email systems up and running — including ensuring performance, addressing availability issues, monitoring and planning for capacities, and so on. Add to this the increasing presence of users' personal mobile devices; adoption of other communication platforms like Lync; migrations from non-Exchange, newer versions of Exchange or consolidations of Exchange environments; and the need for more and more requests for reports for things like:

- Employee communications to check for improper usage
- Data leaks

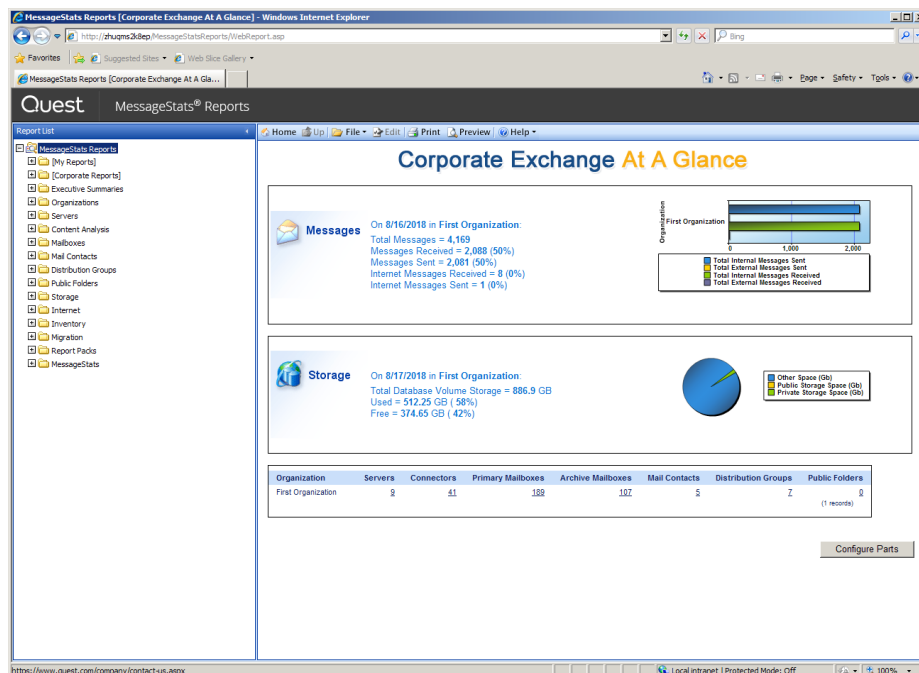
- Compliance and service-level agreement (SLA) audits

With so many tasks to keep track of, it can be near impossible to keep up with day-to-day demands, thus inhibiting them from contributing to higher-value activities and leaving them to toil with more reactive tasks.

With Quest® MessageStats®, you can provide essential visibility for communication environments through aggregated data on Microsoft Exchange, Lync Server, OWA, ActiveSync and IBM Notes. MessageStats also helps you report on organizational compliance objectives, boost operational efficiency and performance, defend SLAs and simplify migrations.

BENEFITS:

- Eliminate the complexity of managing multiple on-premises platforms by reducing the number of necessary reporting solutions
- Reduce the number of ad hoc reporting requests by enabling teams to run their own reports
- Optimize ROI with organization-wide usage visibility
- Avoid incidents with improved system availability throughput, capacity monitoring and planning, performance and SLA reporting
- Improve security and compliance efforts with reports on industry best practices, subject lines, domains and IM usage



Get visibility into your unified communications (UC) system usage at a glance or dive in to review essential details.

SYSTEM REQUIREMENTS

OPERATING SYSTEM

Windows Server 2016

Windows Server 2012 R2

Windows Server 2012

Windows Server 2008 R2 (SP 1)

Windows Server 2008 (SP 2)

DATABASE SERVER (SQL)

SQL Server 2016

SQL Server 2014

SQL Server 2012 (SP 2)

SQL Server 2008 R2 (SP 2)

SQL Server 2008 (SP 3)

IIS SERVER

IIS 7.0 or later

.NET FRAMEWORK

Microsoft .NET Framework 3.5

BROWSER

Internet Explorer 9 or later

DOCUMENTATION

Acrobat Reader 9.0 or later

FEATURES

Complete expertise — beyond Exchange

Get visibility into your entire communication infrastructure from a single solution. With support for Exchange, Lync, OWA, Windows Mobile/ActiveSync and more, it provides all platform reporting under a single pane of glass. There's a reason MessageStats is used daily by thousands of administrators on more than 50 million mailboxes worldwide.

Intelligent reporting

Show your organization's Lync Server trends with MessageStats, including usage of instant messaging, audio/visual conferencing and VoIP. Use MessageStats for departmental chargebacks for UC usage and to create, adjust and subscribe to custom reports across multiple platforms that make sense to managers and business units.

Confident planning

Track and forecast growth on servers so you know when to acquire additional storage. MessageStats helps you inventory the current state of your environment to plan for future upgrades. You can also monitor and track email quotas, message sizes, configuration and usage of mailboxes, public folders, distribution lists and contacts. Find and eliminate unused accounts, mailboxes and servers, and underutilized stores, devices and storage.

SLA defense

Demonstrate to management that SLAs are attained. With MessageStats, you can provide both summaries and detailed data on delivery times, resource usage, capacity, storage, quotas, audited mailboxes or domains, distribution lists, public folders, and more.

Simplified audits, compliance, security

Get through your next audit quickly and efficiently with regulation-specific reports and those required for internal control. Report on keywords, message-level history of all SMTP domain traffic, as well as message header information. You'll be able to enable appropriate access to business managers, other administrators, legal and human resources.

ZeroIMPACT, zero-stress migrations

Make migrations faster and less stressful with planning for server capacities and the ability to inventory the current state of your environment and projections for your new environment. Assess usage and availability before, during and after a migration so you have the intelligence needed to confidently plan and reduce risk. Use MessageStats to prepare for migrations from non-Exchange, newer versions of Exchange or consolidations of Exchange environments.

Fast deployment

Make the most of MessageStats thanks to a small, non-intrusive footprint that simplifies deployment — even in large, distributed organizations. No client installation is required.

ABOUT QUEST

At Quest, our purpose is to solve complex problems with simple solutions. We accomplish this with a philosophy focused on great products, great service and an overall goal of being simple to do business with. Our vision is to deliver technology that eliminates the need to choose between efficiency and effectiveness, which means you and your organization can spend less time on IT administration and more time on business innovation.