

NetVault® for VMware

NetVault® is an enterprise backup and recovery solution that's completely integrated with VMware vSphere Storage APIs – Data Protection.

Quest® NetVault® protects your virtual machines (VMs) from disasters, media failure and data corruption. With NetVault, you get an intuitive graphical user interface (GUI) with a single, centralized console that enables you to easily create backup and restore policies for your virtual environments, both on-premises and in the cloud.

NetVault is an enterprise backup and recovery solution that's completely integrated with VMware vSphere Storage APIs – Data Protection (VADP). It enables you to protect your entire VMware environment without the need for complex scripting or deep understanding of ESXi or VADP internals.

With NetVault, you can minimize downtime by restoring complete VM images or individual files faster and more reliably. Through automatic integration with a wide range of backup storage devices, virtualized data can be protected and safely stored off site, and in the cloud, to meet your disaster recovery and business continuity goals.

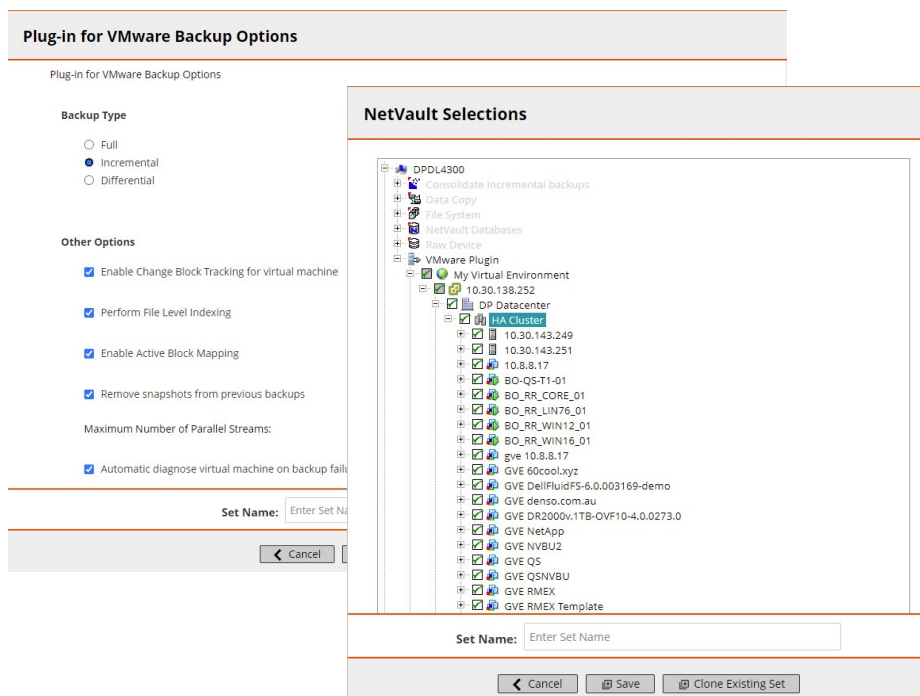
KEY BENEFITS

Scale to protect 100s of Virtual Machines in a single backup job –

Using a backup proxy methodology, NetVault can distribute image-level backups and restores of virtual machines across multiple NetVault clients to protect hundreds of virtual machines in

BENEFITS:

- Simplifies data protection overall
- Provides a single solution for physical, virtual and cloud systems and data
- Speeds backup of large scale VMware environments
- Helps ensure fast recovery to lessen impact on the business



Quest NetVault is an enterprise backup and recovery solution that's completely integrated with your VMware environment.

a single job. Scaling across proxies enables NetVault to take advantage of more available backup storage targets to more efficiently manage backup and restore processes of virtual machines, improve backup performance and reduce backup windows. This methodology also allows NetVault to use load-balancing to protect virtual machines using any available VMware backup proxy, dynamically distributing across proxies while the job is running.

Reducing impact to the production environment — NetVault works with VADP to provide centralized backups that reduce the load on each VMware ESXi server, allowing them to run more VMs and reduce backup traffic on the local area network. This approach is especially important if you need to consolidate hardware.

You'll have the flexibility to protect all your VMs deployed on a VMware ESXi server and to protect multiple VMware ESXi servers with a single NetVault client. You can restore an entire VM or individual files from a Windows or Linux guest directly from an image-level backup stored on disk — no need for an intermediary restore.

Additionally, NetVault benefits from VMotion's ability to track the deployment and migration of VMs to ensure that backups and restores are performed without requiring detailed knowledge of the location of the individual VMs.

Increase confidence while deploying VMware — NetVault protects an individual ESXi server or a full vCenter Server environment while empowering you to create comprehensive, flexible backup policies without the need to understand ESXi or VADP internals or create complex scripting. NetVault provides peace of mind because staff members can simply point and click to back up or restore VMs. It increases storage administration efficiency by consolidating VM backup management into a single environment. The solution enhances Windows protection by performing VSS-based snapshots to quiesce applications before backup.

Ensure business continuity with automatic integration of backup devices — Since off-site backups are an important part of any data protection plan, NetVault integrates with a wide range of backup storage devices. You can ensure that your virtualized environments are protected and stored off site for disaster recovery purposes. NetVault is so easy to use, even less experienced administrators can confidently initiate restores correctly and as quickly as possible, reducing downtime and improving business continuity.

Shorten backup windows and improve device utilization — NetVault can back up multiple VMs in parallel to shrink your backup window. It also exploits Active Block Mapping (ABM) and VMware's Changed Block Tracking (CBT). These technologies ensure only new, changed and active blocks of data are sent over the wire, reducing the backup size and reducing the demand on your network.

What's more, NetVault preserves the use of VMware's thin disk provisioning feature during VM recovery operations to control storage costs and protect data by ensuring virtual machine disks only use the amount of storage they currently need while being able to dynamically add more allocated space as required.

To address demanding backup windows and exponential data growth, you can add Quest QoreStore®. QoreStor is a software-defined replication, deduplication and cloud connected secondary storage solution that's tightly integrated with NetVault. QoreStor will accelerate NetVault backups, reduce storage requirements and cost, and enable use of the cloud for disaster recovery and long-term retention needs.

ABOUT QUEST

Quest creates software solutions that make the benefits of new technology real in an increasingly complex IT landscape. From database and systems management, to Active Directory and Office 365 management, and cyber security resilience, Quest helps customers solve their next IT challenge now. Quest Software. Where next meets now.

Quest

4 Polaris Way, Aliso Viejo, CA 92656 | www.quest.com
If you are located outside North America, you can find local office information on our Web site.

© 2021 Quest Software, Inc. ALL RIGHTS RESERVED. Quest, NetVault and the Quest logo are trademarks and registered trademarks of Quest Software Inc. For a complete list of Quest marks, visit www.quest.com/legal/trademarks.aspx. All other trademarks and registered trademarks are property of their respective owners.
DataSheet-NVBU4VMware-US-LP-67254

Quest