

Quest® Foglight® SQL Performance Investigator

With the database landscape evolving, database professionals are faced with increasing challenges, such as:

- Accommodating cost-cutting measures while supporting growth and big data requirements
- Firefighting database performance issues to ensure service levels
- Maintaining SQL efficiency through performance tuning
- Using time-consuming manual analysis that distracts from strategic business initiatives
- Dealing with a lack of upstream visibility into impacted applications and end users
- Managing a variety of new and old database technologies
- Changing base technologies (virtualization, cloud and storage) resulting in reduced control over available resources

What if you could use a smarter database management tool to address these challenges with confidence and with less impact than conventional data collection methods? Quest® Foglight® SQL Performance Investigator ensures optimal database performance with comprehensive database, storage and virtualization monitoring, along with advanced workload analytics.

FEATURES

Multidimensional Workload Analysis

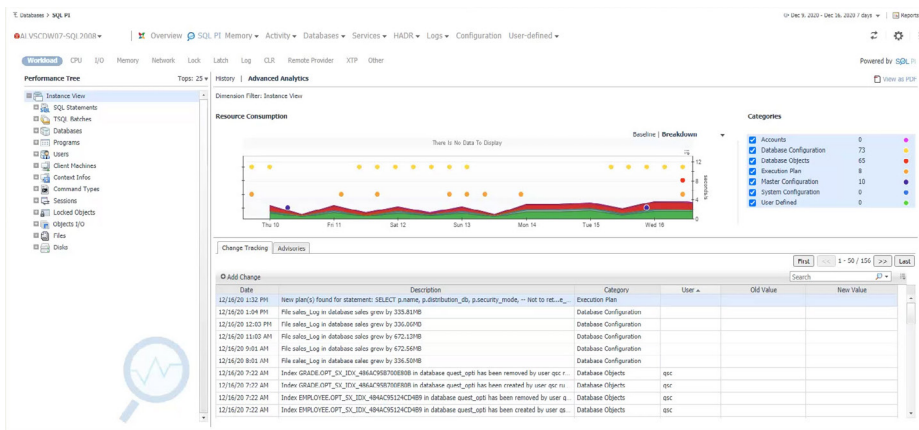
Foglight's multidimensional analysis allows you to "slice and dice" workload data from multiple perspectives. For example, you can drill into the list of databases to find the database with the most load, and then drill into that database to view the top users or see SQL statements for individual users. Each user session can be individually investigated, even in cases where the user name is masked by connection pooling.

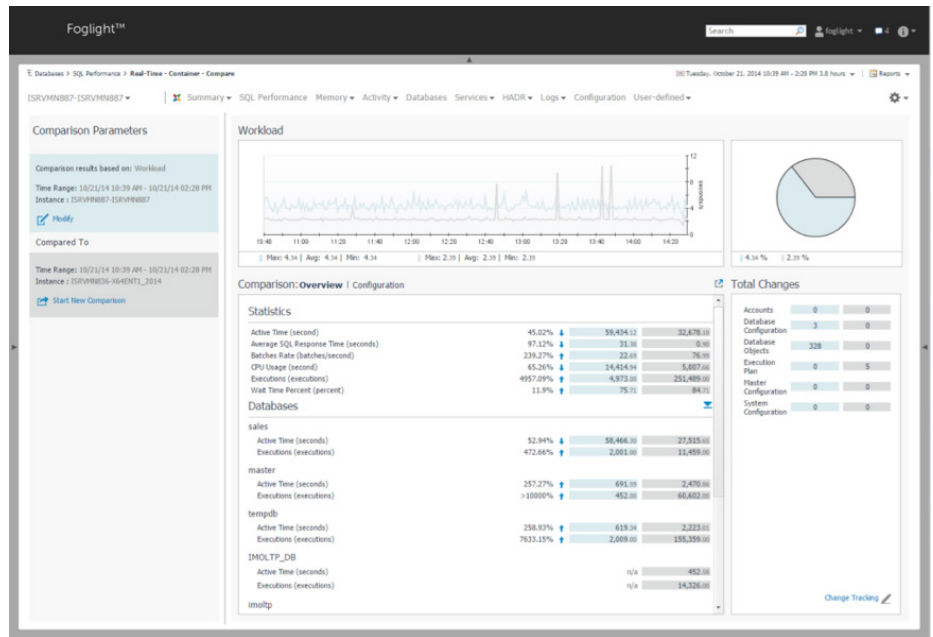
Lock And Wait Analysis

Database blocking can cause considerable application delays, especially in deadlock situations that need to be addressed manually. By proactively alerting you to deadlocks and blocks, Foglight enables you to take preventive action and avoid service interruptions or slowdowns that impact users. When lock timeouts exceed a predefined threshold, Foglight immediately notifies you with an alarm dialog box that contains helpful details and advice.

BENEFITS:

- Institute a seamless workflow using integrated transaction workload investigations and database resource monitoring
- Hundreds of database instances can be monitored with a single monitoring instance
- Agentless data collection executed through remote agents ensures low CPU overhead
- Data collection at one-second intervals ensures high integrity and granularity





SPECIFICATIONS

Supported Oracle Database Versions

- Oracle Database 11g, 12c, 18c, 19c

Supported Deployment Locations

Both on-premises and cloud deployments, including:

- Amazon: IaaS - EC2 - *Windows and Linux; Oracle RDS
- Azure: IaaS - *Windows and Linux

Supported SQL Server Database Versions

- Microsoft SQL Server: 2005, 2008, 2008 R2, 2012, 2014, 2016, 2017, 2019

Supported Deployment Locations

Both on-premises and cloud deployments - including:

- Amazon: IaaS -EC2 - *Windows and Linux; SQL Server RDS
- Azure: IaaS - *Windows and Linux; Azure SQL Managed Instance; Azure SQL DB (Single/elastic pools) – as of Foglight Release 5.9.7.20, December 2020

At any point in the investigation, you can generate a comparison report to contrast your current configuration to another point in time for that selection of data or even compare across instances.

Change Analysis

Track database and environment change events to help pinpoint when and why performance changed. This data can be visualized in the investigative drill downs or used in the comparison reports. Foglight tracks changes in database objects, system configuration, database configuration and execution plans.

- **Execution plan analysis** – After identifying a potentially problematic SQL statement, you can automatically compare its execution plan to prior plans stored in the historical repository to see if there are any significant changes that may have impacted performance
- **Comparison reporting** – Rules ensure that only events worthy of deeper investigation are reported to the historical data repository, which then acts as a data warehouse for future trend analysis and reporting. Comparison reports can be run against the historical data to track deviations from any known good state, informing troubleshooters of appropriate corrective actions.

ABOUT QUEST

Quest creates software solutions that make the benefits of new technology real in an increasingly complex IT landscape. From database and systems management, to Active Directory and Office 365 management, and cyber security resilience, Quest helps customers solve their next IT challenge now. Around the globe, more than 130,000 companies and 95% of the Fortune 500 count on Quest to deliver proactive management and monitoring for the next enterprise initiative, find the next solution for complex Microsoft challenges and stay ahead of the next threat. Quest Software. Where next meets now. For more information, visit www.quest.com.