

Extended Object Support for Stat

Simplify your application setup object migrations

Every company has standard procedures for deploying new software and applications. That means, at minimum, you need one environment dedicated to development, one for testing, another for quality assurance and yet another as your production environment.

In the world of Oracle applications, you run through this cycle frequently since there's no native solution that automatically replicates setup data in each environment. Until now, the answer has been to recreate those setup objects in every instance — an arduous process requiring a lot of manual work, as well as extensive time and resources. But that labor-intensive process is history thanks to the new Extended Object Support feature in Stat for Oracle E-Business Suite (EBS).

With Extended Object Support, Stat for Oracle EBS allows you to automate

the versioning and migration processes for setup objects across all your environments. By delivering application data wherever necessary, you can extend Stat's traditional setup object support to far more objects than ever before.

FEATURES

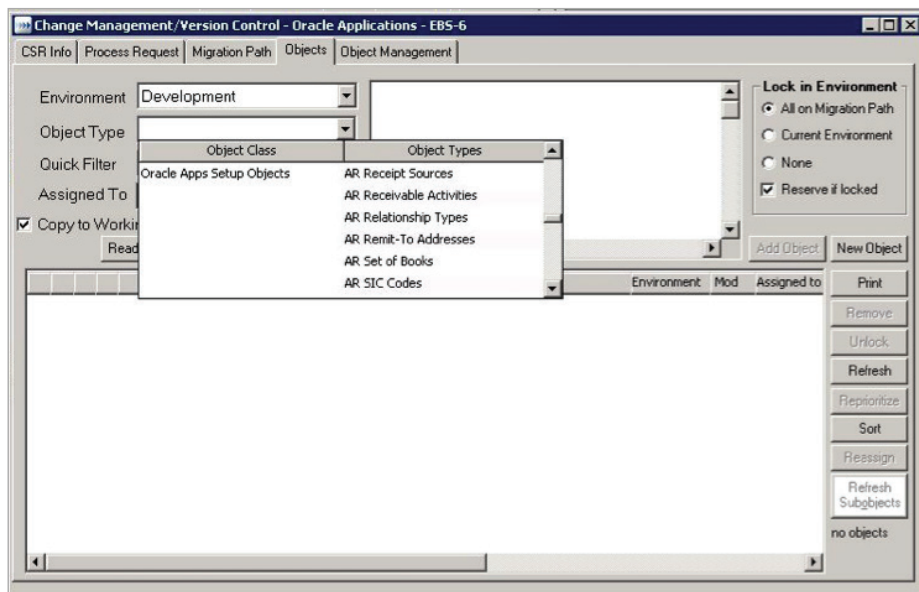
Since recreating setup objects across multiple environments costs valuable time and resources, you need a solution to automate those tasks. That's where Stat for Oracle EBS comes in. Now you can put the Extended Object Support feature to work to ensure you meet your deadline every time.

Object versioning

Archive, migrate and manage versions of your setup objects to ensure you're staying up to date and simplifying the automation process.

BENEFITS:

- Version setup objects to simplify the automation process
- Automate setup object migrations to save valuable time and resources
- Extend your most commonly used setup object modules to all areas of your organization
- Get more return on your Stat investment than you ever imagined



Simplified object migrations

Automate setup object migrations across your various environments, including development, testing, quality assurance (QA) and production, saving you valuable resources and freeing up your time so you can work on other value-add projects.

Expanded setup object modules

Extend your most commonly used and customized application setup object modules to the different areas of your organization to ensure all stakeholders are getting exactly what they need.

Maximum ROI

Save 75 percent more time (assuming a four environment migration path: development, QA, UAT, production) on setup object migrations with Extended Object Support.

See below for a full list of objects supported by Stat for Oracle.

Predefined technical object types

File objects

DRV File	EXE File	FMX File
Form File	Form Library File	LCT File
Menu File	MMX File	OAF: BC4J Component Class files
OAF: BC4J Component Java file	OAF: BC4J Component XML files	OAF: OA Component Class file
OAF: OA Component Class files Java Files	OAF: OA Component Java file	OAF: OA Component XML files (Personalizations)
Object/Library File	ODF File	Oracle Workflow File
PKB (PL/SQL Body) File	PKH (PL/SQL Spec) File	PL/SQL File
PLX File	Report File	SQL File
SQL Script	XDF Editioning View Files (R12.2 only)	XDO XML Publisher Data Source Defs
XDO XML Publisher DS by Template	XDO XML Publisher Template files	XDO XML Publisher Translations

Database objects

Function	Index	Package Body
Package Spec	Procedure	Sequence
Synonym	Table	Trigger
View		

Application object library (AOL)

AOL SSWA Servlet Function – RK 1.4	Application	Concurrent Manager Queues
Concurrent Processing Work Shifts	Concurrent Program Libraries	Concurrent Programs
Concurrent Programs w/o Value Sets – RK 1.4	Descriptive Flexfields	Executables
Folder – RK 1.4	Form	Function
Help	Key Flexfields	Lookup Types
Menu	Messages	Printer Drivers
Printer Information	Printer Styles	Printer Types
Profile Option	Registered Sequences	Registered Tables
Registered Views	Report Request Groups	Report Request Group Units – RK 1.4
Report Request Set Links	Report Request Sets	Responsibility
Roles – RK 1.4	Security Group	Services
SSWA JSP Function – RK 1.4	SSWA PLSQL Function – RK 1.4	User
Value Sets		

OA customization framework setups

Forms Custom Property List	Forms Custom Property Value	Forms Custom Rules
----------------------------	-----------------------------	--------------------

Alerts (ALR) – 1.4 RK

ALR Alert Profile Options	ALR Alerts	ALR Lookups
ALR Mail Accounts	ALR Message Systems	ALR Periodic Sets

Predefined technical object types

Special setups

AK Regions		
------------	--	--

Approval management engine (AME) – 1.4 RK

AME Attribute Usages	AME Attributes	AME Actions
AME Action Types	AME Action Type Configurations	AME Action Usages
AME Action Usages - Seeded	AME Approver Types	AME Calling Applications
AME Conditions	AME Conditions - Seeded	AME Config Variables
AME Approval Groups	AME Approval Groups - Seeded	AME Item Classes
AME Item Class Usages	AME Mandatory Attributes	AME Rules
AME Rules – Seeded		

Accounts payable (AP) – 1.4 RK

AP Hold and Release Codes	AP Income Tax Types	
---------------------------	---------------------	--

Accounts receivable (AR) – 1.4 RK

AR Actions for Confirm. Msg	AR Aging Buckets	AR Application Rule Sets
AR AutoInv GroupBy Cols	AR AutoInv GroupBy Rules	AR AutoInv OrderBy Cols
AR AutoInv OrderBy Rules	AR BPA Area Items	AR BPA Content Items
AR BPA Data Source Applications	AR BPA Data Sources	AR BPA Page Setups
AR BPA Template Assignment Rules	AR BPA URLs	AR Collectors
AR Customer Statement Cycles	AR Customer Statement Messages	AR Dunning Letter Sets (11i Only)
AR Dunning Letters (11i Only)	AR HZ CC Phone Prefixes	AR HZ Class Categories
AR HZ Class Relationships	AR HZ Code Assignments	AR HZ Entity Attributes
AR HZ Match Rules	AR HZ Relationship Types	AR HZ Search Word Replacements
AR HZ Source System Mapping	AR HZ Source Systems	AR TCA Party Usage Rules
AR TCA Party Usages	AR HZ Transformations	AR HZ Transformation Attrs
AR HZ Word Replacement Conditions	AR HZ Word Replacement List	AR Invoice/Accounting Rules
AR Lockbox Transmit Formats	AR Memo Lines	AR Receipt Batch Sources
AR Receipt Classes, Payment Methods	AR Tax Codes	AR Timezone Address Mapping
AR Transaction Batch Sources	AR Transaction Matching Rules	AR Transaction Types

Bill of material (BOM) – 1.4 RK

BOM Accounting Library Packages	BOM Alternate Designators	BOM Component Columns
BOM Delete Constraints	BOM Exception Sets	BOM Structure Types

Fixed assets (FA) – 1.4 RK

FA Asset Categories	FA Assets	FA Ceilings
FA Depreciation Basis Rule Details	FA Depreciation Basis Rules	FA Depreciation Bonus Rates
FA Depreciation Methods	FA ITC Rates	FA ITC Recapture Rates
FA Lookups	FA RX Report LOVs	FA RX Reports

General ledger (GL) – 1.4 RK

GL Accounting Calendar	GL Budgetary Control Options	GL Daily Conversion Types
GL Definition Access Sets	GL Encumbrance Types	GL Financial Data Items
GL Journal Categories	GL Journal Sources	GL Period Types
GL Storage Parameters		

Predefined technical object types

Human resources (fast formula) – 1.4 RK

FF Formula Definitions	FF Formula Routes	FF Functions
------------------------	-------------------	--------------

Inventory (INV) – 1.4 RK

INV Background Process Config	INV Category Sets	INV Cross Reference Types
INV Economic Zones	INV Functional Area Default Cat Set	INV Inventory Status Codes
INV Item Attributes	INV Item Category Set Assignments	INV Item Status Codes
INV Item Templates	INV Items Assigned to Category Set	INV Item Attribute Seed Information
INV Movement Statistics Rule Sets	INV Pick Release Grouping Rules	INV Transaction Source Types
INV Transaction Types	INV Unit of Measure Classes	INV Unit of Measures
INV Valid Categories for Cat Set		

Order management (ONT) – 1.4 RK

ONT AK Object Attribute Extensions	ONT AK Object Extensions	ONT All Payment Types
ONT Attribute Defaulting Condition	ONT Attribute Defaulting Rules	ONT Defaulting Conditions
ONT Defaulting Conditions Elements	ONT PC Assignments	ONT PC Conditions
ONT PC Record Set Columns	ONT PC Record Sets	ONT PC Validation Templates
ONT PC Validation Template Columns	ONT Process Constraints (PC)	ONT All OM System Parameters

*See RK install instructions for support.

Extended Object Support – financials modules

Accounts payable (AP)

AP Distribution Sets	AP Expense Report Templates	AP Financial Options
AP Holds	AP Interest Rates	AP Invoice Tolerances
AP Payable Options	AP Payable Periods	AP Payable System Setup
AP Payment Templates	AP Payment Terms	AP Release Names
AP Supplier Site Contacts	AP Supplier Sites	AP Suppliers

Accounts receivable (AR)

AR Adaptors	AR Aging Buckets	AR AutoCash Rule Sets
AR Automatic Accounting	AR Class Categories	AR Class Categories Uses
AR Collectors	AR Credit Rules	AR Currencies
AR Customer Accounts	AR Customer Contacts	AR Customer Relationships
AR Customers	AR Customer Site Contact	AR Customer Sites
AR Customer Site Uses	AR Customer Transaction Types	AR Distribution Sets
AR Invoice Grouping Rules	AR Invoice Grouping Trans. Types	AR Invoice Line Ordering Rules
AR Invoicing and Accounting Rules	AR iRec Rule Details	AR iRec Rule Objects
AR Ledger Sets	AR Payment Terms	AR Profile Classes
AR Receipt Classes	AR Receipt Sources	AR Receivable Activities
AR Relationship Types	AR Remit-To Addresses	AR Set of Books
AR SIC Codes	AR Source System	AR Standard Memo Lines
AR Statement Cycles	AR System Options	AR Transaction Sources
AR Transaction Types	AR User Approval Adjustment Limits	Receipt Methods

Global/systems (AOL)

FND Document Sequences	FND Security Rules	SYS Data Access Sets
SYS Geography Types		

Extended Object Support — financials modules

iExpense (OIE)

OIE Audit Lists	OIE Auditors	OIE Audit Rule Assignments
OIE Audit Rule Sets	OIE Duplicate Detection Rule Assign	OIE Duplicate Detention Rules
OIE Duplicate Detention Rule Sets	OIE Expense Type Data Rules	OIE Policy Context
OIE Policy Exchange Rate Options	OIE Policy Itemizations	OIE Policy Locations
OIE Policy Options	OIE Policy Schedule Headers	OIE Policy Schedule Lines

General ledger

GL Autopost Criteria	GL Calendar Period Types	GL Conversion Rate Types
GL Currency Rate Tables	GL Currency Revaluation Range Templates	GL Currency Revaluation Templates
GL Journal Approvals	GL Journal Category Mappings	GL Journal Sources
GL Locations	GL Operating Units	GL Organization Types
GL Units of Measures	GL Auto Reversing	GL FSG Column Sets
GL FSG Content Sets	GL FSG Reports	GL FSG Report Display Groups
GL FSG Report Display Sets	GL FSG Row Orders	GL FSG Row Sets
GL Mass Allocations	GL Recurring Journals	

Human resources (PER)

PER Security Profiles		
-----------------------	--	--

Payment (IBY)

IBY Payment Formats	IBY Payment Methods	
---------------------	---------------------	--

Cash management (CE)

CE Automation Rules	CE Bank Transaction Codes	CE Cash Management Forecast Templates
CE Payment Documents	CE System Parameters	

Oracle E-Business tax (EBT)

EBT Tax Accounts	EBT Tax Authorities	EBT Tax Condition Sets
EBT Tax Configurations	EBT Tax Determining Factor Sets	EBT Taxes
EBT Tax Jurisdictions	EBT Tax Rates	EBT Tax Regimes
EBT Tax Reporting Types	EBT Tax Rules	EBT Tax Statuses
EBT Tax Zone Types	EBT Transaction Classifications	EBT Transaction Fiscal Classification

Fixed assets (FA)

FA Financial Asset Categories	FA Financials Book Controls	FA Calendar
FA Default Depreciation Rules		

Subledger accounting (SLA or XLA)

XLA Account Derivation Rules	XLA Application Acct. Definitions	XLA Custom Sources
XLA Event Models	XLA Journal Entry Descriptions	XLA Journal Line Definitions
XLA Journal Line Types	XLA Mapping Sets	XLA Subledger Acct. Methods

Legal entities (XLE)

XLE Association Object Types	XLE Association Types	XLE Associations
XLE GL BSV Assignments	XLE Legal Entities	XLE Legal Establishments
XLE Jurisdictions	XLE Tax Registrations	

Payment (IBY)

IBY Bank Account GL Codes	IBY Bank Accounts	IBY Bank Locations
IBY Banks	IBY Bank Sites	IBY Branches
IBY Branch Locations	IBY Branch Sites	IBY Delivery Channel Codes

Extended Object Support — financials modules

IBY Funds Cap. Proc. Profiles – CC-System	IBY Funds Cap. Proc. Profiles – CC – User	IBY Funds Cap. Proc.Profiles – DC – System
IBY Funds Cap. Proc.Profiles – DC – User	IBY Funds Cap. Proc. Profiles – EFT – System	IBY Funds Cap. Proc. Profiles – EFT – User

Payment (IBY)

IBY Funds Capture Setup Payee	IBY Payment Bank Instruction Codes	IBY Payment Method Defaulting Rules
IBY Payment Process Profiles	IBY Payment Reason Codes	IBY Payment System Options
IBY Payment Systems	IBY Transmission Configurations	

Collections (IEX)

IEX Collections Categories/Sources	IEX Delinq. Status Scoring Ranges	IEX Delinquency Prioritizations
IEX Dunning Plan Aging Buckets	IEX Dunning Plans - Collection	IEX Params Scoring Comp. Functions
IEX Scoring Component Types	IEX Scoring Engines	IEX Scoring Filters
IEX Scoring Model Attributes	IEX System Parameters	IEX Tax Data Points
IEX Work Item Templates		

Lease management (OKL)

OKL Accounting Options	OKL Contract and Credit Line Hdrs	OKL Contract and Credit Line Nmbrs
OKL Credit Management Checklists	OKL Credit Rules	OKL Credit Usage Rules
OKL Credit Usage Rules Sets	OKL End of Term Option	OKL Invoice Grouping Rules
OKL Lease Contract Template Headers	OKL Lease Contract Template Lines	OKL Lease Income Accrual Rules
OKL Lease Interest Rates	OKL Lease Invoice Messages	OKL Lease Late Policies
OKL Lease Operational Options	OKL Lease Rate Sets	OKL Off Lease Amort. Hold Periods
OKL Property Tax Options	OKL Receipts Cash Application Rules	OKL Receipts Search Rules
OKL Remarketer Assignments	OKL Repair Costs	OKL Service Fees
OKL Subsidies	OKL Subsidy Pools	

Contract services (OKS)

OKS Coverage Templates		
------------------------	--	--

Loans (LNS)

LNS Loan Accounting	LNS Loan Conditions	LNS Loan Fees
LNS Loan Products	LNS Loan Rates	LNS Loan Resources
LNS Loan System Options	LNS Loan Types	

Extended Object Support — human resources module

HR foundation payroll (HR)

HR Employees	HR Group Creation	HR Jobs
HR Link Roles	HR Locations	HR Position Hierarchies
HR Positions	HR Security Profiles	HR Task Statuses
HR Task Types		

Extended Object Support — supply chain modules

Inventory (INV)

INV Account Aliases	INV ATP Rules	INV Categories
INV Category Sets	INV Inventory Item	INV Item Catalog Groups
INV Item Cross Reference Types	INV Item Relationships	INV Item Status
INV Item Templates	INV Mfg Part Numbers	INV Org Parameters

Extended Object Support — supply chain modules

INV Physical Inventories	INV Picking Rules	INV Pick Slip Grouping Rules
INV Receiving Options	INV Shipping Networks	INV Stock Locators
INV Sub Inventories	INV Units of Measure	INV Units of Measure Classes
Purchasing (PO)		
PO Approval Assignments	PO Approval Groups	PO Approved Supplier List
PO Buyers	PO Expense Account Rules	PO Purchasing Options
PO Reason Codes	PO Sourcing Rules	PO UN Number
Bill of materials (BOM)		
BOM Configurations	Department Classes	Departments
Exception Templates	FND Security Rules	Workday Calendars
Order management (OM)		
ONT Credit Checking	ONT Defaulting Rules	ONT Holds
ONT Order Import Sources	ONT Processing Constraints	ONT Release Rules
ONT Release Sequence Rules	ONT System Parameters	ONT Transaction/Line Types
ONT Workflow Assignment		
Accounts receivable		
AR Customer Relationships		
Shipping (WSH)		
WSH Freight Carriers	WSH Freight Cost Types	WSH Hazard Classes
WSH Inspection Codes	WSH Shipping Document Printers	WSH Shipping Document Sets
WSH Shipping Exceptions	WSH Shipping Parameters	WSH Transit Times
Pricing (QP)		
QP Pricing Formulas	QP Price Lists	
iProcurement (IPRO)		
IPRO Catalog Categories	IPRO Catalog Content Zones	IPRO Catalog Store Catalogs 11i
IPRO Catalog Store Org Assignments 11i	IPRO Catalog Stores	IPRO Catalog Stores 11i

Extended Object Support — projects module

Projects suite (PA)		
PA Budget Entry Methods	PA Budget Types	PA Class Categories
PA Class Codes	PA Event Types	PA Org Labor Costing Rules
PA Planning Resource Formats	PA Probability Lists	PA Bill Rates
PA Classifications	PA Expenditure Categories	PA Expenditure Types
PA Labor Costing Rules	PA Labor Cost Multipliers	PA Non-Labor Resources
PA Resource Classes	PA Resource Lists	PA Resource Parent Members
PA Resources	PA Resource Types	PA Resource Types Merged
PA Role Jobs	PA Roles	PA Standard Bill Rate Schedules
PA Status Menu Map	PA Transaction Sources	PA Project Types
PA Resources	PA Role Controls	PA Role Lists

*Extended Object Support is an optional component to Stat. License required.

ABOUT QUEST

Quest helps our customers reduce tedious administration tasks so they can focus on the innovation necessary for their businesses to grow. Quest® solutions are scalable, affordable and simple-to-use, and they deliver unmatched efficiency and productivity. Combined with Quest's invitation to the global community to be a part of its innovation, as well as our firm commitment to ensuring customer satisfaction, Quest will continue

Quest

4 Polaris Way, Aliso Viejo, CA 92656 | www.quest.com
If you are located outside North America, you can find local office information on our Web site.

© 2017 Quest Software, Inc. ALL RIGHTS RESERVED. Quest, Stat and the Quest logo are trademarks and registered trademarks of Quest Software Inc. For a complete list of Quest marks, visit www.quest.com/legal/trademarks.aspx. All other trademarks and registered trademarks are property of their respective owners.
DataSheet-StatExtendedObjectSupport-US-KS-25739

The Quest logo consists of the word "Quest" in a bold, sans-serif font. The letter "Q" is significantly larger than the other letters and is colored red, while the remaining letters "uest" are in a dark blue color.