

DATA SHEET

Recovery Manager for Active Directory Disaster Recovery Edition

Back up and recover your Active Directory forest quickly and confidently from any disaster.

The average cost of an hour of Active Directory downtime amounts to \$730,000. With downtime ranging from hours to weeks after a ransomware attack or other disaster, the losses can easily add up into the millions of dollars.¹ Active Directory (AD) is increasingly in the attackers' crosshairs because it is the gateway to privileged accounts and sensitive data.

Recovery Manager for Active Directory Disaster Recovery Edition simplifies, automates, and accelerates Active Directory backup and recovery with unmatched security, flexibility and options to meet the needs of your business continuity and disaster recovery plans. With Recovery Manager, you can slash AD forest recovery time from days or weeks to just hours, giving you peace of mind that an AD disaster will not become a business disaster.

Fast and secure Active Directory forest recovery is vital following a cyberattack. The longer AD is down, the longer your business is down. "The restore process from many well-documented ransomware attacks has been hindered by not having an intact AD restore process," according to Gartner, which also states that you can "accelerate recovery from attacks by adding a dedicated tool for backup and recovery of Microsoft Active Directory."

According to a Forrester Consulting study, Recovery Manager customers have reduced recovery times from days to hours and projected saving \$19.7M from ransomware attacks over three years.¹ Quest knows that extensive automation from Recovery Manager reduces the risk of human error and having to start over as the result of those errors. Recovery Manager also protects AD backups from compromise and

Benefits

- Protect your backups from malware to withstand the next ransomware attack.
- Handle any AD disaster or recovery scenario, from attribute changes to SYSVOL corruption to full AD forest disasters.
- Automate the entire AD forest recovery process, including the 40+ steps outlined in Microsoft's AD forest recovery best practices.
- Choose the best method for your situation, whether that's phased recovery, restoring AD to a clean OS or bare metal recovery.
- Eliminate the risk of malware re-infection throughout your AD recovery, scanning for malware and minimizing its hiding places.
- Automate the entire AD forest recovery process, including the 40+ steps outlined in Microsoft's AD forest recovery best practices.
- Rely on an AD disaster recovery pioneer that helps thousands of customers reduce cyber risk and increase resilience, including 50% of the Fortune

eliminates the risk of malware reinfection. It's like an insurance policy for AD that you can't afford not to have.

Quest delivers market leading flexibility and options, and complete AD backup and recovery at the attribute and object level, directory level and operating system level — across the entire forest.

Streamlined AD recovery from ransomware

Efficient and reliable AD backups

Back up exactly what you need to recover AD. By omitting extraneous and risky components like boot files and the IIS Metabase, Recovery Manager reduces backup bloat, makes the backup process more efficient and minimizes the places where malware can hide.

Phased and paused recovery to shorten RTO

After you back up Active Directory, you can shorten recovery time objectives with a phased AD recovery approach. Quickly restore key DCs, enabling signin and business-critical functions as soon as possible. Then dramatically accelerate recovery of remaining DCs with automated repromotion methods. You can also pause recovery operations to run scripts, check for changes, and quarantine files with custom rules, thus improving recovery accuracy and improving your security posture.

Flexible AD recovery options

Choose the Active Directory disaster recovery method that works best in a given situation, whether that's phased recovery, restoring to a clean OS to minimize the risk of malware reinfection or bare metal recovery. You can restore AD to a clean OS on any machine, whether it's a physical machine, on-prem virtual machine or a cloud-hosted VM.

Clean OS recovery to the cloud

During an attack, you need to restore to a new machine you can trust. Quickly and easily create Microsoft Azure resources including virtual machines during a forest recovery. This enables you to recover AD to a readily available, secure and cost-effective machine that you can trust is clean from malware.

Being able to restore an AD forest in hours instead days is priceless. Now I can sleep peacefully.

IT Manager, Telefónica España

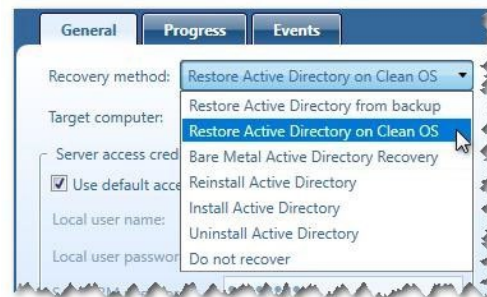


Figure Flexible recovery methods include restoring AD to a clean OS and a Microsoft-compliant bare metal recovery.

Malware-free recovery

Eliminate the risk of malware re-infection throughout your AD forest recovery, with regular checks for viruses after the backup file is created, during storage when updates are added and before a restore is started with integrated Microsoft's Defender capabilities. Integrity checks ensure backups have not been modified since creation.

Secure storage

Ensure backups are always available with multiple options for secure physical and cloud storage. Protect AD backups from malware infection with Secure Storage, a hardened server that is isolated according to IPSec rules with regular checks to confirm backup integrity. Even if you lose your DCs, Tier 1 storage and even your Recovery Manager server, you still have the Secure Storage backup that is hardened and secure to withstand the ransomware attack.

AD backups in the cloud

Recovery Manager ensures that your AD backups are always available in case of disaster with the flexibility to store backups in secure cloud locations such as immutable Azure Blob Storage and AWS cloud storage. available, secure and cost-effective machine that you can trust is clean from malware.

Operating system recovery

Quickly restore your domain controller's operating system without depending on others. Recovery Manager for Active Directory Disaster Recovery Edition gives AD admins more control of the recovery process, saving time and resources by eliminating dependencies on crossdepartmental teams.

Additional capabilities

- **Online granular restore** — Restore individual attributes, such as account settings, group memberships and binary attributes, even when the object itself has not been deleted. This enables you to restore only the required attributes without restarting domain controllers.
- **Comparison reporting** — Highlight changes made since the last backup by comparing the online state of AD with its backup or by comparing multiple backups. Accelerate recovery by quickly pinpointing deleted or changed objects or attributes. And with Change Auditor you can easily identify who made the changes.
- **AD management and health validation** — Inspect AD for warning signs of possible issues before they become disasters by checking DC accessibility, replication, trusts and user authentication.
- **Recovery console fault tolerance** — With Recovery Manager for Active Directory Disaster Recovery Edition, you can share persistent configuration data between several instances of your recovery consoles so that you can quickly resume the last restore operation in case it was unexpectedly interrupted.

There aren't too many tools that are competitive with Recovery Manager, but we compared one other product. The Quest solution was more complete and met more of our needs; the other tool didn't have nearly as many features.

Johan Lindahl, IT Infrastructure Specialist, Skandia

- **Recovery roadmap** — After you back up Active Directory, you can generate a detailed recovery process report, including an overview of every stage of the recovery, to gain a better understanding and more control over the project.
- **Hybrid AD and Azure AD recovery** — A solid on-premises AD recovery plan alone isn't sufficient since so many organizations are making greater use of cloud-only objects such as Azure AD groups, Azure B2B/B2C accounts, conditional access policies and more. With On Demand Recovery, you can quickly and securely back up and recover Azure AD.
- **Backup and restore of Recovery Manager Installation Configuration** — Quickly restore your Forest console settings and project files, not just the target data, in the instance of a scorched earth scenario or similar situation.

About Quest Software

Quest Software creates technology and solutions that build the foundation for enterprise AI. Focused on data management and governance, cybersecurity and platform modernization, Quest helps organizations address their most pressing challenges and make the promise of AI a reality. Around the globe, more than 45,000 companies including over 90% of the Fortune 500 count on Quest Software. For more information, visit www.quest.com or follow Quest Software on [X \(formerly Twitter\)](#) and [LinkedIn](#).