

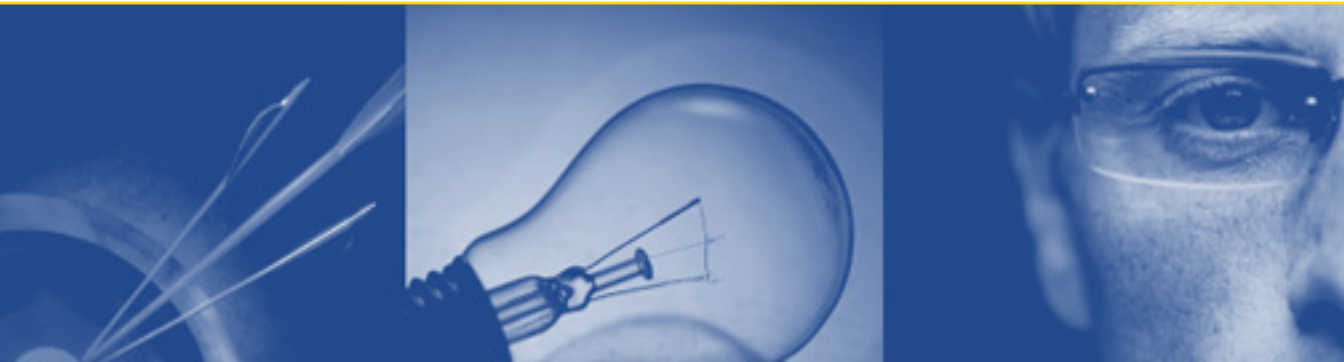


# Quest<sup>®</sup> **Site Administrator 3.0**

---

*for SharePoint*

What's New



**© Copyright Quest® Software, Inc. 2008. All rights reserved.**

This guide contains proprietary information, which is protected by copyright. The software described in this guide is furnished under a software license or nondisclosure agreement. This software may be used or copied only in accordance with the terms of the applicable agreement. No part of this guide may be reproduced or transmitted in any form or by any means, electronic or mechanical, including photocopying and recording for any purpose other than the purchaser's personal use without the written permission of Quest Software, Inc.

## **DISCLAIMER**

The information in this document is provided in connection with Quest products. No license, express or implied, by estoppel or otherwise, to any intellectual property right is granted by this document or in connection with the sale of Quest products. EXCEPT AS SET FORTH IN QUEST'S TERMS AND CONDITIONS AS SPECIFIED IN THE LICENSE AGREEMENT FOR THIS PRODUCT, QUEST ASSUMES NO LIABILITY WHATSOEVER AND DISCLAIMS ANY EXPRESS, IMPLIED OR STATUTORY WARRANTY RELATING TO ITS PRODUCTS INCLUDING, BUT NOT LIMITED TO, THE IMPLIED WARRANTY OF MERCHANTABILITY, FITNESS FOR A PARTICULAR PURPOSE, OR NON-INFRINGEMENT. IN NO EVENT SHALL QUEST BE LIABLE FOR ANY DIRECT, INDIRECT, CONSEQUENTIAL, PUNITIVE, SPECIAL OR INCIDENTAL DAMAGES (INCLUDING, WITHOUT LIMITATION, DAMAGES FOR LOSS OF PROFITS, BUSINESS INTERRUPTION OR LOSS OF INFORMATION) ARISING OUT OF THE USE OR INABILITY TO USE THIS DOCUMENT, EVEN IF QUEST HAS BEEN ADVISED OF THE POSSIBILITY OF SUCH DAMAGES. Quest makes no representations or warranties with respect to the accuracy or completeness of the contents of this document and reserves the right to make changes to specifications and product descriptions at any time without notice. Quest does not make any commitment to update the information contained in this document.

## **TRADEMARKS**

Quest Site Administrator for SharePoint is a trademark of Quest Software, Inc. Other trademarks and registered trademarks used in this guide are property of their respective owners.

World Headquarters  
5 Polaris Way  
Aliso Viejo, CA 92656  
[www.quest.com](http://www.quest.com)  
e-mail: [info@quest.com](mailto:info@quest.com)

Please refer to our Web site for regional and international office information.

Quest Site Administrator for SharePoint  
Updated – October, 2008  
Software version – 3.0

# Contents

<b>ABOUT QUEST SOFTWARE, INC.</b> .....	<b>3</b>
CONTACTING QUEST SOFTWARE .....	3
CONTACTING QUEST SUPPORT .....	3
<b>WHAT'S NEW IN SITE ADMINISTRATOR FOR SHAREPOINT</b> .....	<b>4</b>
NEW FEATURES IN SITE ADMINISTRATOR 3.0.....	4
<i>Enhanced Performance of Add Server Farm Wizard</i> .....	4
<i>Security Explorer</i> .....	4
<i>Site Permission Report</i> .....	5
<i>Support for Windows Server 2008</i> .....	5



# About Quest Software, Inc.

Quest Software, Inc. delivers innovative products that help organizations get more performance and productivity from their applications, databases and Windows infrastructure. Through a deep expertise in IT operations and a continued focus on what works best, Quest helps more than 18,000 customers worldwide meet higher expectations for enterprise IT. Quest's Windows Management solutions simplify, automate and secure Active Directory, Exchange and Windows, as well as integrate Unix and Linux into the managed environment. Quest Software can be found in offices around the globe and at [www.quest.com](http://www.quest.com).

## Contacting Quest Software

Email	<a href="mailto:info@quest.com">info@quest.com</a>
Mail	Quest Software, Inc. World Headquarters 5 Polaris Way Aliso Viejo, CA 92656 USA
Web site	<a href="http://www.quest.com">www.quest.com</a>

Refer to our Web site for regional and international office information.

## Contacting Quest Support

Quest Support is available to customers who have a trial version of a Quest product or who have purchased a commercial version and have a valid maintenance contract. Quest Support provides around the clock coverage with SupportLink, our web self-service. Visit SupportLink at <http://support.quest.com>

From SupportLink, you can do the following:

- Quickly find thousands of solutions (Knowledgebase articles/documents).
- Download patches and upgrades.
- Seek help from a Support engineer.
- Log and update your case, and check its status.

View the ***Global Support Guide*** for a detailed explanation of support programs, online services, contact information, and policy and procedures. The guide is available at: [http://support.quest.com/pdfs/Global Support Guide.pdf](http://support.quest.com/pdfs/Global%20Support%20Guide.pdf)

# What's New in Site Administrator for SharePoint

This document describes the new features and enhancements of Quest Site Administrator for SharePoint.

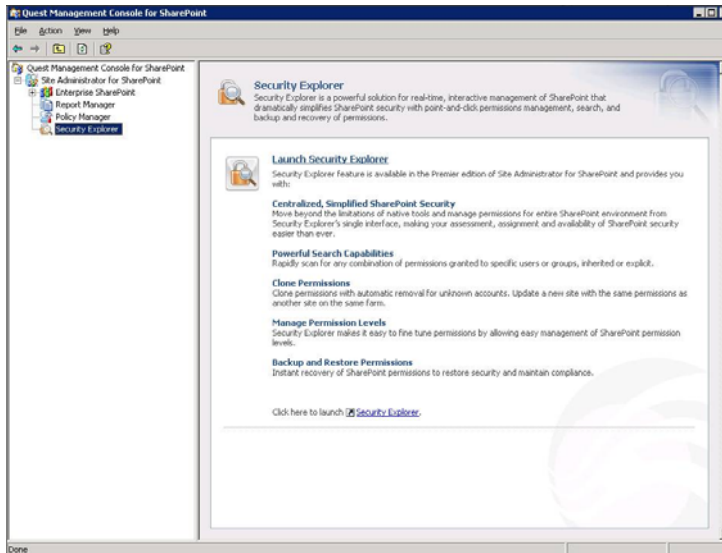
## New features in Site Administrator 3.0

### Enhanced Performance of Add Server Farm Wizard

The Add Server Farm Wizard now avoids unnecessary checks for the SharePoint servers to which administrator has access to, and completes much faster. This also allows you to add SharePoint web applications that might not be available at the moment to the Site Administrator's management scope.

### Security Explorer

The new Security Explorer feature allows the user to search for and modify security on SharePoint servers. This also includes group membership and permission levels management and ability to clone permissions from one user to another.



## Site Permission Report

Site Administrator for SharePoint comes with a Site Permission report which allows you to view the users and Active Directory groups having access to the site, document library or list, and their permission levels. You can also see how each permission level has been granted to a user or an Active Directory group.

The screenshot shows the Quest Management Console for SharePoint interface. The main content area displays a 'Site Permission Report' for the site URL `http://angara-05/sites/ListPermTest`. The report indicates that the site has unique permissions. It includes three tables: 'Site permissions', 'Lists with inherited permissions', and 'Lists with unique permissions'.

**Site permissions**

User/Group Name	Type	Permission Level	Granted (via)
ATCHILD\jee	User	Limited Access	Explicitly
ATCHILD\patrick	User	Limited Access	Explicitly
ATCHILD\stevan	User	Limited Access	Explicitly
SHAREPOINT\system	User	Limited Access	Explicitly

**Lists with inherited permissions**

Site URL: `http://angara-05/sites/ListPermTest`  
 The following lists inherit permissions from the site: KPMG Contacts, Link1, List Template Gallery, Master Page Gallery, Pictures, Shared Documents, Site Template Gallery, Survey1, Web Part Gallery

**Lists with unique permissions**

List Title	User/Group Name	Type	Permission Level	Granted (via)
Announcements	ATCHILD\stevan	User	Read	Explicitly
HR Doclib	ATCHILD\jee	User	Contribute	Explicitly
HR Doclib	ATCHILD\jee	User	Read	Explicitly
HR Doclib	ATCHILD\patrick	User	Full Control	Explicitly

## Support for Windows Server 2008

Site Administrator can now be installed on a computer running Windows Server 2008 and also supports SharePoint and SQL Server deployments on Windows Server 2008.